

Supplier's Product Code :
Product Added :
Last Updated by Supplier :
erudus id :

FI0042
29 October 2024
29 October 2024
016ed7b4af7d44f7823949b6315cde40



The information on the **Erudus System** has been supplied by the manufacturers of the products and, whilst the owners of the Erudus System take steps to ensure the information is regularly updated, they give no warranty and no guarantee that the information is accurate. Product information and ingredients may change, please always read product labels carefully in addition to using the information provided by Erudus One.

We do not accept liability for any inaccuracies or incorrect information contained on this site. Please visit <http://www.erudus.com/terms-and-conditions> for full terms and conditions.

Judes Strawberries & Cream Ice Cream - 6 x 4L

Short Product Name:

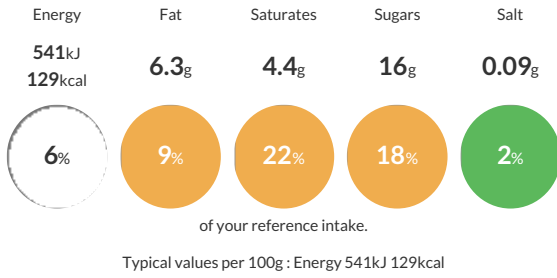
Jude's Strawberries & Cream Ice Cream - 6 x 4L

Strawberry Ice Cream

Traded Unit GTIN: **05060081110222** Internal GTIN: **5060081110659** Supplier: **Judes Ices** Suppliers Product Code: **FI0042**

Reference Intake

Each 100g portion contains:



Nutritional Information

Typical Values	Per 100g
Energy	541kJ 129kCal
Carbohydrates	16g
of which sugars	16g
Fat	6.3g
of which saturates	4.4g
Fibre	-g
Protein	2.5g
Salt	0.09g

Allergy Information

Key: **Contains** **May Contain**



Dietary Information

Key: **Suitable for**



Allergen Statement

For allergens see ingredients in bold.

Ingredients

fresh whole **milk**, sugar, strawberry puree (12%), strawberries in syrup (10%) [**strawberries** (56%), sugar, water, gelling agent (pectin)], fresh double cream (**milk**) (9%), skimmed **milk** powder, coconut oil, pasteurised free range **egg** yolk, colour (red beet extract), natural flavouring, spirulina extract, dextrose, emulsifier (mono- and diglycerides of fatty acids), stabilisers (locust bean gum, guar gum), water, citric acid.