

Supplier's Product Code :
Product Added :
Last Updated by Supplier :
erudus id :

801887
11 July 2024
11 July 2024
02b737ab730741f7a66d27c5ad48580e



The information on the **Erudus System** has been supplied by the manufacturers of the products and, whilst the owners of the Erudus System take steps to ensure the information is regularly updated, they give no warranty and no guarantee that the information is accurate. Product information and ingredients may change, please always read product labels carefully in addition to using the information provided by Erudus One.

We do not accept liability for any inaccuracies or incorrect information contained on this site. Please visit <http://www.erudus.com/terms-and-conditions> for full terms and conditions.

Mission Pitta with added Sourdough 400g

Short Product Name:

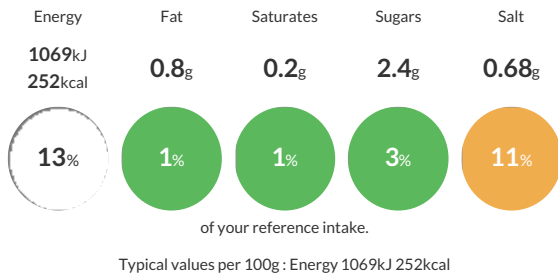
Pitta with added Sourdough

5 Round Sourdough Pitta Breads.

Traded Unit GTIN: **05036034007833** Internal GTIN: Supplier: **Mission Foods (Seaham)** Suppliers Product Code: **801887**

Reference Intake

Each 100g portion contains:



Nutritional Information

Typical Values	Per 100g
Energy	1069kJ 252kCal
Carbohydrates	51g
of which sugars	2.4g
Fat	0.8g
of which saturates	0.2g
Fibre	2.4g
Protein	8.9g
Salt	0.68g

Allergy Information

Key: **Contains** **May Contain**



Allergen Statement

ERUDUS:

For allergens, including cereals containing gluten, see ingredients in **CAPITALS**.

Case label;

For allergens, including cereals containing gluten, see ingredients in **BOLD**.

Ingredients

Fortified **WHEAT** flour (**WHEAT** Flour, Calcium Carbonate, iron, Niacin, Thiamin), Water, Sourdough (contains **WHEAT**, Brandy Vinegar, **WHEAT** Starch), Yeast, Salt.