

Supplier's Product Code :  
 Product Added :  
 Last Updated by Supplier :  
 erudus id :

T-M060-P12  
 28 October 2014  
 18 December 2023  
 033c55f992ea4b54afed4e0dd8eb18c2



The information on the Erudus System has been supplied by the manufacturers of the products and, whilst the owners of the Erudus System take steps to ensure the information is regularly updated, they give no warranty and no guarantee that the information is accurate. Product information and ingredients may change, please always read product labels carefully in addition to using the information provided by Erudus One.

We do not accept liability for any inaccuracies or incorrect information contained on this site. Please visit <http://www.erudus.com/terms-and-conditions> for full terms and conditions.

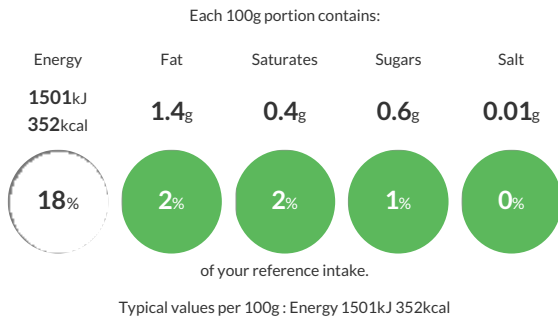
## Fine Lady Plain Flour 3Kg

Short Product Name:  
 Plain Flour

Wheat Flour

Traded Unit GTIN: 5021583002583 Internal GTIN: 5021583002583 Supplier: Heygates Ltd Suppliers Product Code: T-M060-P12

### Reference Intake



### Nutritional Information

Typical Values	Per 100g
Energy	1501kJ 352kCal
Carbohydrates	80.9g
of which sugars	0.6g
Fat	1.4g
of which saturates	0.4g
Fibre	3.4g
Protein	11.6g
Salt	0.01g

### Allergy Information

Key: Contains May Contain

Contains Cereal/Gluten	Does Not Contain Milk	Does Not Contain Eggs	Does Not Contain Peanuts	Does Not Contain Nuts	Does Not Contain Crustaceans	Does Not Contain Mustard
Does Not Contain Fish	Does Not Contain Lupin	Does Not Contain Sesame	Does Not Contain Celery	May Contain Soya	Does Not Contain Molluscs	Does Not Contain Sulphur Dioxide

### Dietary Information

Key: Suitable for

Suitable for Vegetarian	Suitable for Vegan	May not be suitable for Kosher	Suitable for Halal	May not be suitable for Coeliac
-------------------------	--------------------	--------------------------------	--------------------	---------------------------------

### Allergen Statement

Adventitious cross contamination can occur especially when handling foreign wheat. Transportation (vessels, trains, road haulage), port storage and conveying systems could be handled with other combinable crops. Measures are in place to reduce any adventitious contamination within the supply chain and Heygates employ the services of a port superintendent to check previous loads and to take samples of incoming wheat. The wheat cleaning screens room should extract seeds and grains based on density and size.

### Ingredients

Wheat Flour (WHEAT flour, Calcium Carbonate (E170), Iron, Nicotinamide (Vit B3), Thiamine Hydrochloride (Vit B1))