

Supplier's Product Code :  
Product Added :  
Last Updated by Supplier :  
erudus id :

798F  
29 November 2021  
16 December 2021  
0349b5ad07af4ffa8b262ad19570c104



The information on the **Erudus System** has been supplied by the manufacturers of the products and, whilst the owners of the Erudus System take steps to ensure the information is regularly updated, they give no warranty and no guarantee that the information is accurate. Product information and ingredients may change, please always read product labels carefully in addition to using the information provided by Erudus One.

We do not accept liability for any inaccuracies or incorrect information contained on this site. Please visit <http://www.erudus.com/terms-and-conditions> for full terms and conditions.

## Brioche Burger Bun x2

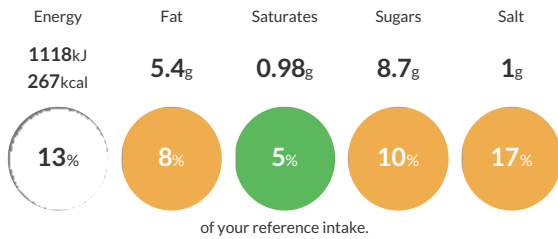
Short Product Name:  
Brioche Burger Bun

Brioche Burger Bun

Traded Unit GTIN: **5060500391164** Internal GTIN: Supplier: **The Sourdough Company Ltd** Suppliers Product Code: **798F**

### Reference Intake

Each 100g portion contains:



Typical values per 100g : Energy 1118kJ 267kcal

### Nutritional Information

Typical Values	Per 100g
Energy	1118kJ 267kCal
Carbohydrates	50.3g
of which sugars	8.7g
Fat	5.4g
of which saturates	0.98g
Fibre	2.1g
Protein	7.5g
Salt	1g

### Allergy Information

Key: **Contains** **May Contain**



### Dietary Information

Key: **Suitable for**



### Allergen Statement

Contains gluten containing ingredients Wheat and Barley. May contain Rye, Oats, Spelt/Kamut.

### Ingredients

White Flour (**WHEAT** Flour, Calcium Carbonate, Iron, Niacin, Thiamin), Water, Sugar, Margarine (Rapeseed Oil, Palm Oil, Coconut Oil, Salt, Beta Carotene, Flavouring, Emulsifier (E471)), Dried **WHEAT** Sourdough (**WHEAT** Flour, Starter Culture, Flour Treatment Agent: Ascorbic Acid (E300), Enzymes, **WHEAT** Gluten), **BARLEY** Malt Flour, Yeast, Rapeseed Oil, Salt, Glaze (Pea Protein, Dextrose), Crumb Softener (**WHEAT** Flour), Beta Carotene.