

Supplier's Product Code :
 Product Added :
 Last Updated by Supplier :
 erudus id :

1050
 09 December 2014
 09 January 2023
 0386ba65b4cd430694343c7254d25a84



The information on the **Erudus System** has been supplied by the manufacturers of the products and, whilst the owners of the Erudus System take steps to ensure the information is regularly updated, they give no warranty and no guarantee that the information is accurate. Product information and ingredients may change, please always read product labels carefully in addition to using the information provided by Erudus One.

We do not accept liability for any inaccuracies or incorrect information contained on this site. Please visit <http://www.erudus.com/terms-and-conditions> for full terms and conditions.

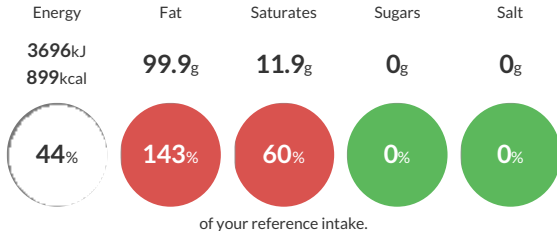
KTC Sunflower Oil 6 x 2L

Refined and deodorised Sunflower oil derived from the seeds of Helianthus annus L.

Traded Unit GTIN: **05013635606238** Internal GTIN: **5013635606207** Supplier: **KTC (Edibles) Ltd** Suppliers Product Code: **1050**

Reference Intake

Each 100g portion contains:



Typical values per 100g : Energy 3696kJ 899kcal

Nutritional Information

Typical Values	Per 100g
Energy	3696kJ 899kCal
Carbohydrates	0g
of which sugars	0g
Fat	99.9g
of which saturates	11.9g
Fibre	0g
Protein	0g
Salt	0g

Allergy Information

Key: **Contains** **May Contain**

Does Not Contain Cereal/Gluten	Does Not Contain Milk	Does Not Contain Eggs	Does Not Contain Peanuts	Does Not Contain Nuts	Does Not Contain Crustaceans	Does Not Contain Mustard
Does Not Contain Fish	Does Not Contain Lupin	Does Not Contain Sesame	Does Not Contain Celery	Does Not Contain Soya	Does Not Contain Molluscs	Does Not Contain Sulphur Dioxide

Gluten Claim

Gluten content is less than 20ppm.

Ingredients

Sunflower Oil

Dietary Information

Key: **Suitable for**

Suitable for Vegetarian	Suitable for Vegan	Suitable for Kosher	Suitable for Halal	Suitable for Coeliac
-------------------------	--------------------	---------------------	--------------------	----------------------