

Supplier's Product Code :
Product Added :
Last Updated by Supplier :
erudus id :

GP2005B
22 March 2019
06 October 2021
03b3744c4fed4cc8a9ce1a0ec7b4ec7e



The information on the Erudus System has been supplied by the manufacturers of the products and, whilst the owners of the Erudus System take steps to ensure the information is regularly updated, they give no warranty and no guarantee that the information is accurate. Product information and ingredients may change, please always read product labels carefully in addition to using the information provided by Erudus One.

We do not accept liability for any inaccuracies or incorrect information contained on this site. Please visit <http://www.erudus.com/terms-and-conditions> for full terms and conditions.

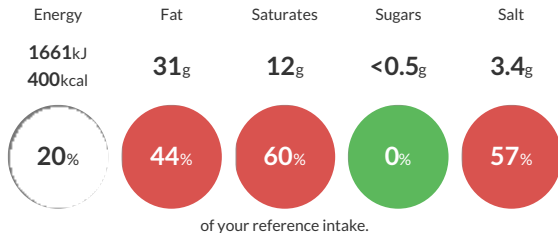
Beechwood Smoked Medium Cook 200/100 Postage Stamp Salad Bacon x 1kg tray

SALAD BACON

Traded Unit GTIN: 05908243698068 Internal GTIN: 5908243698068 Supplier: Food Connexions International Ltd Suppliers Product Code: GP2005B

Reference Intake

Each 100g portion contains:



Typical values per 100g : Energy 1661kJ 400kcal

Nutritional Information

Typical Values	Per 100g
Energy	1661kJ 400kCal
Carbohydrates	<0.5g
of which sugars	<0.5g
Fat	31g
of which saturates	12g
Fibre	-g
Protein	30g
Salt	3.4g

Allergy Information

Key: **Contains** **May Contain**



Gluten Claim

Gluten content is less than 20ppm.

Ingredients

pork bacon, salt, glucose, antioxidant (sodium ascorbate), preservative (sodium nitrite).

Dietary Information

Key: **Suitable for**

