

Supplier's Product Code :
 Product Added :
 Last Updated by Supplier :
 erudus id :

13444
 31 August 2016
 02 May 2023
 0448799fa55b4ea8b65b1ee08aa08f6c



The information on the **Erudus System** has been supplied by the manufacturers of the products and, whilst the owners of the Erudus System take steps to ensure the information is regularly updated, they give no warranty and no guarantee that the information is accurate. Product information and ingredients may change, please always read product labels carefully in addition to using the information provided by Erudus One.

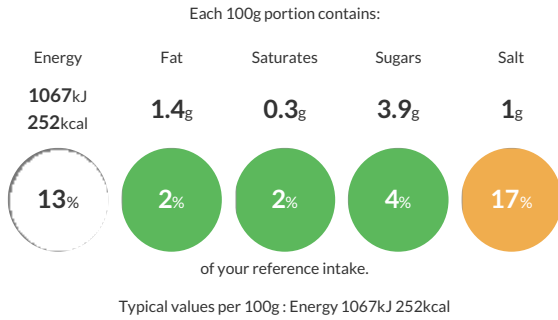
We do not accept liability for any inaccuracies or incorrect information contained on this site. Please visit <http://www.erudus.com/terms-and-conditions> for full terms and conditions.

800g 14+2 MWG D Tin (Box 8FR)

Brown bread with malted wheat flakes, barley malt flour and buckwheat.

Traded Unit GTIN: **05011579221043** Internal GTIN: Supplier: **Frank Roberts & Sons Ltd** Suppliers Product Code: **13444**

Reference Intake

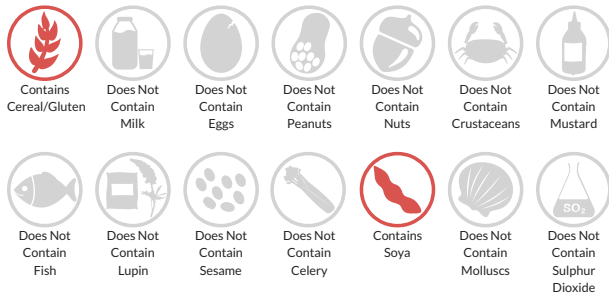


Nutritional Information

Typical Values	Per 100g
Energy	1067kJ 252kCal
Carbohydrates	49g
of which sugars	3.9g
Fat	1.4g
of which saturates	0.3g
Fibre	2.6g
Protein	9.5g
Salt	1g

Allergy Information

Key: **Contains** **May Contain**



Dietary Information

Key: **Suitable for**



Allergen Statement

For allergens including cereals containing gluten, see ingredients in **CAPITALS**.

Ingredients

WHEAT Flour (with added calcium, iron, niacin and thiamine), Water, Malted WHEAT Flakes (9.0%), Yeast, WHEAT Gluten, BARLEY Malt Flour, Salt, Buckwheat Flour, Emulsifier: E472e. SOYA Flour, Preservative: E282. Rapeseed Oil, Flour Treatment Agent: E300.