

Supplier's Product Code :  
Product Added :  
Last Updated by Supplier :  
erudus id :

412691  
13 December 2020  
13 December 2023  
045777c3283d405ebba1113168d0ae9f



The information on the Erudus System has been supplied by the manufacturers of the products and, whilst the owners of the Erudus System take steps to ensure the information is regularly updated, they give no warranty and no guarantee that the information is accurate. Product information and ingredients may change, please always read product labels carefully in addition to using the information provided by Erudus One.

We do not accept liability for any inaccuracies or incorrect information contained on this site. Please visit <http://www.erudus.com/terms-and-conditions> for full terms and conditions.

## LYLES GOLDEN SYRUP 2X4X750G

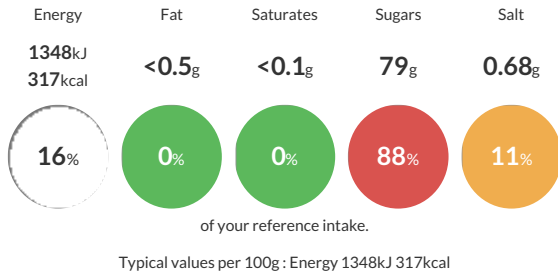
Short Product Name:  
GOLDEN SYRUP

A golden colour invert formed of a combination of sucrose, glucose and fructose found naturally in sugar cane. More commonly known as Lyle's Golden Syrup Easiflow formula, it has rich caramel and honey-like flavour. Golden Cane Invert Syrup 47 - 79 reduces water activity, lowers freezing point, increases humectancy and adds texture, colour and flavour to tarts, puddings, sauces, cereal bars.

Traded Unit GTIN: 5010115126910 Internal GTIN: 5010115826919 Supplier : Tate & Lyle Sugars Suppliers Product Code : 412691

### Reference Intake

Each 100g portion contains:



### Nutritional Information

Typical Values	Per 100g
Energy	1348kJ 317kCal
Carbohydrates	79g
of which sugars	79g
Fat	<0.5g
of which saturates	<0.1g
Fibre	0g
Protein	<0.5g
Salt	0.68g

### Allergy Information

Key: **Contains** **May Contain**



#### Allergen Statement

This product is Allergen free as defined by European Regulation (EU) 1169/2011 and European Commission Regulation (EC) 41/2009 (Gluten  $\leq$  20ppm).

### Ingredients

Partially inverted refiners syrup

### Dietary Information

Key: **Suitable for**

