

Supplier's Product Code : 80513  
 Product Added : 15 May 2024  
 Last Updated by Supplier : 15 May 2024  
 erudus id : 04730fa949f946e2bbd85db1ecbb447f



The information on the Erudus System has been supplied by the manufacturers of the products and, whilst the owners of the Erudus System take steps to ensure the information is regularly updated, they give no warranty and no guarantee that the information is accurate. Product information and ingredients may change, please always read product labels carefully in addition to using the information provided by Erudus One.

We do not accept liability for any inaccuracies or incorrect information contained on this site. Please visit <http://www.erudus.com/terms-and-conditions> for full terms and conditions.

## Cinnamon Swirl

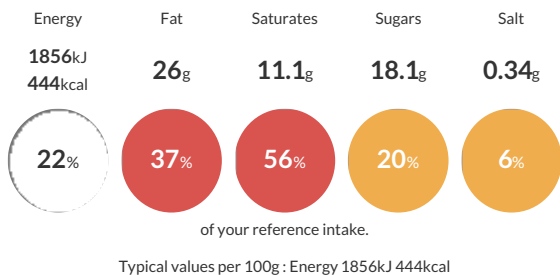
Short Product Name:  
Cinnamon Swirl

Frozen pre-proved Danish pastry swirl with a cinnamon filling, topped with glaze.

Traded Unit GTIN: 05701536805132 Internal GTIN: Supplier: Lantmannen Unibake Suppliers Product Code: 80513

### Reference Intake

Each 100g portion contains:



### Nutritional Information

Typical Values	Per 100g
Energy	1856kJ 444kCal
Carbohydrates	46.5g
of which sugars	18.1g
Fat	26g
of which saturates	11.1g
Fibre	0.8g
Protein	5.7g
Salt	0.34g

### Allergy Information

Key: Contains May Contain



### Dietary Information

Key: Suitable for



### Allergen Statement

May contain traces of nuts.

### Ingredients

**DOUGH:** WHEAT Flour (with Calcium, Iron, Niacin, Thiamin), Vegetable Margarine (Palm Oil, Rapeseed Oil, Water, Emulsifier (E471), Salt, Acidity Regulator (E330), Flavouring), Water, Yeast, Egg (EGG, Salt), Sugar, Improver (WHEAT Flour). **FILLING:** Vegetable Margarine (Palm Oil, Rapeseed Oil, Water, Coconut Oil, Salt, Emulsifier (E471), Acidity Regulator (E330), Flavouring), Sugar, Water, Custard Powder (Sugar, Modified Potato Starch, Whey Powder (MILK), Skimmed MILK Powder, Coconut Oil, Stabilisers (E404, E450iii, E339ii, E451i), Glucose Syrup, Flavouring, Colour (E160aiii), Salt, MILK Protein), Sugar Syrup, Cinnamon (0.5%), WHEAT Flour, Cane Sugar Syrup. **TOPPING:** Ready Glaze (Water, Glazing Agent (E953), Sugar, Gelling Agent (E406), Acidity Regulator (E330), Preservative (E202)). **ICING:** (Sugar, Water, Glucose Syrup).