

Supplier's Product Code :
Product Added :
Last Updated by Supplier :
erudus id :

F02389
24 May 2022
24 May 2022
04b1f72fc3014308b7d19c0002bb71aa



The information on the **Erudus System** has been supplied by the manufacturers of the products and, whilst the owners of the Erudus System take steps to ensure the information is regularly updated, they give no warranty and no guarantee that the information is accurate. Product information and ingredients may change, please always read product labels carefully in addition to using the information provided by Erudus One.

We do not accept liability for any inaccuracies or incorrect information contained on this site. Please visit <http://www.erudus.com/terms-and-conditions> for full terms and conditions.

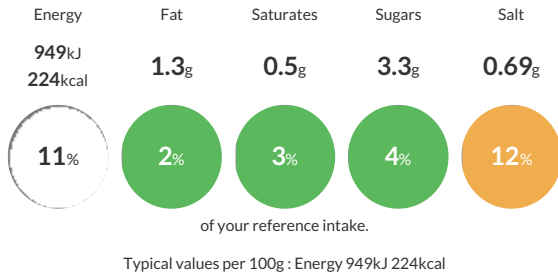
Kara Medium Malted Bloomer

A medium sliced D shaped malted bloomer, perfect for toast and sandwiches.

Traded Unit GTIN: **05051788123899** Internal GTIN: Supplier: **Kara Foodservice (Fletchers)** Suppliers Product Code: **F02389**

Reference Intake

Each 100g portion contains:



Nutritional Information

| Typical Values | Per 100g |
|--------------------|------------------|
| Energy | 949kJ 224kCal |
| Carbohydrates | 42.5g |
| of which sugars | 3.3g |
| Fat | 1.3g |
| of which saturates | 0.5g |
| Fibre | 4.6g |
| Protein | 8.3g |
| Salt | 0.69g |

Allergy Information

Key: **Contains** **May Contain**



Allergen Statement

For allergens (including cereals containing gluten), see ingredients in **CAPITALS**.

Ingredients

Wheat Flour (**WHEAT** Flour, Calcium Carbonate, Niacin, Iron, Thiamin), Water, Malted **WHEAT** Flakes (3.5%), **WHEAT** Flour, Malted **BARLEY** Flour, **WHEAT** Gluten, Salt, Yeast, Palm Oil, Emulsifiers (E472e, E471), **WHEAT** Bran, Spirit Vinegar, **BARLEY** Flour, Preservative (E282), **SOYA** Flour, Flour Treatment Agent (E300).