

Supplier's Product Code :
Product Added :
Last Updated by Supplier :
erudus id :

CHI015
29 November 2024
29 November 2024
05a94f031aa943d2a73d4b5b03118a7a



The information on the Erudus System has been supplied by the manufacturers of the products and, whilst the owners of the Erudus System take steps to ensure the information is regularly updated, they give no warranty and no guarantee that the information is accurate. Product information and ingredients may change, please always read product labels carefully in addition to using the information provided by Erudus One.

We do not accept liability for any inaccuracies or incorrect information contained on this site. Please visit <http://www.erudus.com/terms-and-conditions> for full terms and conditions.

Wasabi Paste 43g

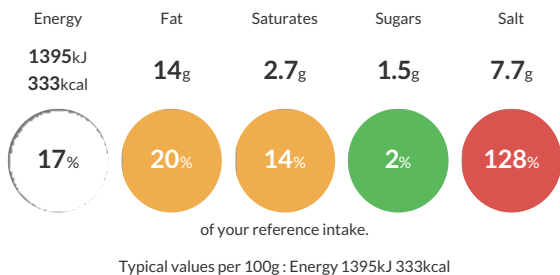
Short Product Name:
Wasabi Paste

None

Traded Unit GTIN: 16971835852311 Internal GTIN: 6971835852314 Supplier: Centaur Foods Ltd Suppliers Product Code: CHI015

Reference Intake

Each 100g portion contains:



Nutritional Information

Typical Values	Per 100g
Energy	1395kJ 333kCal
Carbohydrates	55g
of which sugars	1.5g
Fat	14g
of which saturates	2.7g
Fibre	2.9g
Protein	1.8g
Salt	7.7g

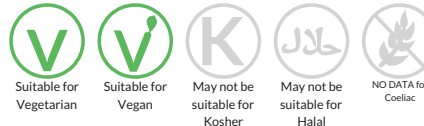
Allergy Information

Key: Contains May Contain



Dietary Information

Key: Suitable for



Allergen Statement

Product contains **SOY** and may contain **MUSTARD**

Ingredients

Water, Horseradish powder, Humectant (E420), Refined soybean oil, Corn starch, Salt, Maltodextrin, Grated wasabi 1.6%, Turmeric, Acidity regulator (E330), Flavoring, Thickener (E415), Colour (E133).