

Supplier's Product Code :
Product Added :
Last Updated by Supplier :
erudus id :

WFMCL90X30
03 December 2021
16 February 2022
05f78b3666bf4cbf94d63ea7b13b58c5



The information on the **Erudus System** has been supplied by the manufacturers of the products and, whilst the owners of the Erudus System take steps to ensure the information is regularly updated, they give no warranty and no guarantee that the information is accurate. Product information and ingredients may change, please always read product labels carefully in addition to using the information provided by Erudus One.

We do not accept liability for any inaccuracies or incorrect information contained on this site. Please visit <http://www.erudus.com/terms-and-conditions> for full terms and conditions.

Wafflemeister 90g Classic Liege Waffle - 30 x 90g

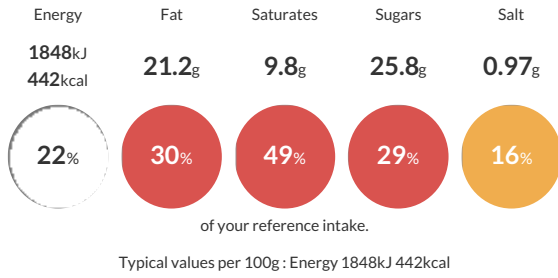
Short Product Name:
90g Classic Liege Waffle

Traditional 90g Classic Belgian Liege Waffle

Traded Unit GTIN: **5060868700080** Internal GTIN: **5060868700066** Supplier: **Wafflemeister Trading Ltd** Suppliers Product Code: **WFMCL90X30**

Reference Intake

Each 100g portion contains:



Nutritional Information

Typical Values	Per 100g
Energy	1848kJ 442kCal
Carbohydrates	55.8g
of which sugars	25.8g
Fat	21.2g
of which saturates	9.8g
Fibre	1.8g
Protein	5.9g
Salt	0.97g

Allergy Information

Key: **Contains** **May Contain**



Allergen Statement

Contains Wheat, Eggs and Soya
May contain traces of Milk

Dietary Information

Key: **Suitable for**



Ingredients

WHEAT flour, sugar, margarine (vegetable oils and fats (palm and rapeseed)), water, emulsifiers soya lecithin, mono- and diglycerides of fatty acids, salt, acid regulator: citric acid, natural flavours, colouring (beta-carotene), EGGS, yeast, invert sugar syrup, stabilizer sorbitol, SOYA flour, salt, emulsifier soya lecithin, flavour.