

Supplier's Product Code :
 Product Added :
 Last Updated by Supplier :
 erudus id :

WLC0662
 17 February 2023
 04 July 2024
 07020c1b59924bee9cdaca69f4654df2



The information on the **Erudus System** has been supplied by the manufacturers of the products and, whilst the owners of the Erudus System take steps to ensure the information is regularly updated, they give no warranty and no guarantee that the information is accurate. Product information and ingredients may change, please always read product labels carefully in addition to using the information provided by Erudus One.

We do not accept liability for any inaccuracies or incorrect information contained on this site. Please visit <http://www.erudus.com/terms-and-conditions> for full terms and conditions.

GF Vegan Cherry Bakewell Tarts (1 x 28)

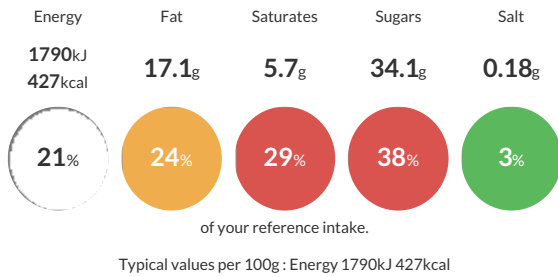
Short Product Name:

Individually wrapped. Cherry bakewell tart filled with raspberry jam and almond flavoured sponge, topped with fondant icing and a half glacé cherry. Wheat, gluten and milk-free. Suitable for vegetarians, vegans and coeliacs. Defrosted shelf-life = 28 days. (1 x 28)

Traded Unit GTIN: **05028931106627** Internal GTIN: **5028931006620** Supplier: **Central Foods Group Ltd** Suppliers Product Code: **WLC0662**

Reference Intake

Each 100g portion contains:



Nutritional Information

Typical Values	Per 100g
Energy	1790kJ 427kCal
Carbohydrates	63.6g
of which sugars	34.1g
Fat	17.1g
of which saturates	5.7g
Fibre	2.1g
Protein	3.6g
Salt	0.18g

Allergy Information

Key: **Contains** **May Contain**

Does Not Contain Cereal/Gluten	Does Not Contain Milk	May Contain Eggs	May Contain Peanuts	Contains Nuts	Does Not Contain Crustaceans	Does Not Contain Mustard
Does Not Contain Fish	Does Not Contain Lupin	Does Not Contain Sesame	Does Not Contain Celery	Does Not Contain Soya	Does Not Contain Molluscs	Does Not Contain Sulphur Dioxide

Dietary Information

Key: **Suitable for**

Suitable for Vegetarian	Suitable for Vegan	May not be suitable for Kosher	May not be suitable for Halal	Suitable for Coeliac
-------------------------	--------------------	--------------------------------	-------------------------------	----------------------

Gluten Claim

Gluten content is less than 20ppm.

Allergen Statement

For allergens, see ingredients in **CAPITALS**.

Ingredients

Sugar, Tapioca Starch, Brown Rice Flour, Raspberry Jam (9%) (Glucose-fructose Syrup, Raspberry Concentrate, Sugar, Gelling Agent (E440), Acidity Regulators (E330, E331), Colour (E163), Flavouring, Preservative (E202)), Palm Oil, Ground **ALMONDS** (6%), Rapeseed Oil, Glacé Cherries (6%) (Cherries, Glucose-fructose Syrup, Sugar, Fruit and Vegetable Juice Extracts (Carrot, Radish, Apple, Cherry, Sweet Potato), Acidity Regulator (E330)), Glucose Syrup, Water, Brown Sugar, Coconut Milk, Rice Flour, Cornflour, Gram Flour, Fructose, Dextrose, Emulsifiers (E471, E473), Flavouring, Salt, Colours (E150a, E161b), Thickener (E415), Preservatives (E202, E282), Humectant (Glycerine), Raising Agents (E341, E500), Acidity Regulators (E260, E330), Rice Starch.