

Supplier's Product Code :  
Product Added :  
Last Updated by Supplier :  
erudus id :

410787  
02 February 2015  
18 October 2023  
072efcbdf7fd4478add1e7d3965b86bc



The information on the Erudus System has been supplied by the manufacturers of the products and, whilst the owners of the Erudus System take steps to ensure the information is regularly updated, they give no warranty and no guarantee that the information is accurate. Product information and ingredients may change, please always read product labels carefully in addition to using the information provided by Erudus One.

We do not accept liability for any inaccuracies or incorrect information contained on this site. Please visit <http://www.erudus.com/terms-and-conditions> for full terms and conditions.

## T&L DEM SACHET 1000 X 2.5G

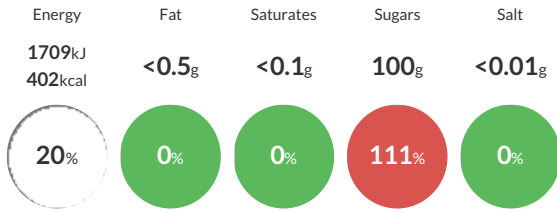
Short Product Name:

T&L DEM SACHET 1000 X 2.5G

Traded Unit GTIN: 5010115107872 Internal GTIN: 5010115107872 Supplier: Tate & Lyle Sugars Suppliers Product Code: 410787

### Reference Intake

Each 100g portion contains:



Typical values per 100g : Energy 1709kJ 402kcal

### Nutritional Information

Typical Values	Per 100g
Energy	1709kJ 402kCal
Carbohydrates	100g
of which sugars	100g
Fat	<0.5g
of which saturates	<0.1g
Fibre	0g
Protein	0.5g
Salt	<0.01g

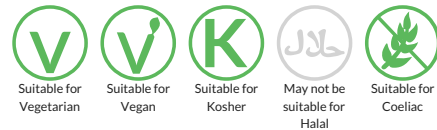
### Allergy Information

Key: Contains May Contain



### Dietary Information

Key: Suitable for



### Ingredients

Demerara Sugar