

Supplier's Product Code :  
Product Added :  
Last Updated by Supplier :  
erudus id :

PYFS  
29 October 2021  
16 December 2021  
08c655cfd9ae43c5bb5ff45460a12bc2



The information on the [Erudus System](#) has been supplied by the manufacturers of the products and, whilst the owners of the Erudus System take steps to ensure the information is regularly updated, they give no warranty and no guarantee that the information is accurate. Product information and ingredients may change, please always read product labels carefully in addition to using the information provided by Erudus One.

We do not accept liability for any inaccuracies or incorrect information contained on this site. Please visit <http://www.erudus.com/terms-and-conditions> for full terms and conditions.

## Sourdough Crackers - Foodservice Mixed Case

Short Product Name:

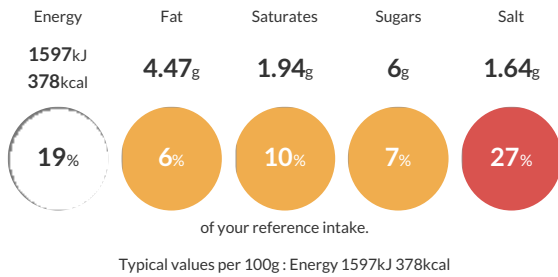
Sourdough Crackers - Foodservice Mixed Case

Mixed Case of Sourdough Crispbread - Original 105g, Rye & Charcoal 90g, Fig & Spelt 100g

Traded Unit GTIN:  Internal GTIN:  Supplier:  Curd and Cure Suppliers Product Code:  PYFS

### Reference Intake

Each 100g portion contains:



### Nutritional Information

Typical Values	Per 100g
Energy	1597kJ 378kCal
Carbohydrates	74.6g
of which sugars	6g
Fat	4.47g
of which saturates	1.94g
Fibre	9.14g
Protein	12g
Salt	1.64g

### Allergy Information

Key:  Contains  May Contain



### Dietary Information

Key:  Suitable for



### Ingredients

MILK, RYE flour, WHEAT flour (WHEAT flour, Calcium, Iron, Thiamin, Niacin), sourdough (RYE flour, water), wholemeal WHEAT flour, honey, salt, MILK, RYE flour, WHEAT flour (WHEAT flour, Calcium, Iron, Thiamin, Niacin), sourdough (rye flour, water), wholemeal WHEAT flour, honey, butter (MILK), charcoal, sea salt, Spelt WHEAT flour, MILK, dried fig pieces, sourdough (RYE flour, water), honey, sea salt