

Supplier's Product Code :
 Product Added :
 Last Updated by Supplier :
 erudus id :

KFC420
 21 October 2013
 18 November 2022
 094e64f77d6f491c85585af93bca42cf



The information on the **Erudus System** has been supplied by the manufacturers of the products and, whilst the owners of the Erudus System take steps to ensure the information is regularly updated, they give no warranty and no guarantee that the information is accurate. Product information and ingredients may change, please always read product labels carefully in addition to using the information provided by Erudus One.

We do not accept liability for any inaccuracies or incorrect information contained on this site. Please visit <http://www.erudus.com/terms-and-conditions> for full terms and conditions.

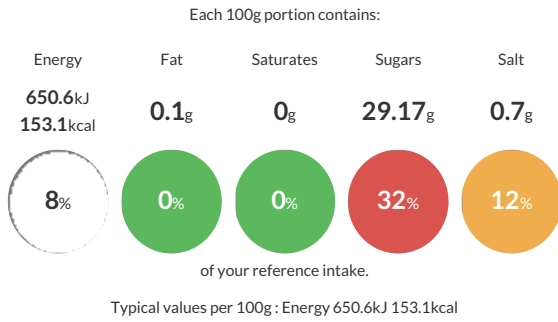
Red Onion Marmalade 1.2kg

Short Product Name:

Red Onion Marmalade- chutney in 1.2kg catering plastic tub

Traded Unit GTIN: Internal GTIN: Supplier: **The Wooden Spoon Preserving Company** Suppliers Product Code: **KFC420**

Reference Intake



Nutritional Information

Typical Values	Per 100g
Energy	650.6kJ 153.1kCal
Carbohydrates	30.8g
of which sugars	29.17g
Fat	0.1g
of which saturates	0g
Fibre	0.9g
Protein	7.2g
Salt	0.7g

Allergy Information

Key: **Contains** **May Contain**

Gluten < 20ppm	Does Not Contain Cereal/Gluten	Does Not Contain Milk	Does Not Contain Eggs	Does Not Contain Peanuts	May Contain Nuts	Does Not Contain Crustaceans	Does Not Contain Mustard
Does Not Contain Fish	Does Not Contain Lupin	Does Not Contain Sesame	Does Not Contain Celery	Does Not Contain Soya	Does Not Contain Molluscs	Does Not Contain Sulphur Dioxide	

Gluten Claim

Gluten content is less than 20ppm.

Ingredients

Red Onions (72%), Sugar, Vinegar, Salt, Black Pepper, Agar.

Dietary Information

Key: **Suitable for**

Suitable for Vegetarian	Suitable for Vegan	May not be suitable for Kosher	May not be suitable for Halal	Suitable for Coeliac
-------------------------	--------------------	--------------------------------	-------------------------------	----------------------