

Supplier's Product Code :  
Product Added :  
Last Updated by Supplier :  
erudus id :

PD86  
04 July 2024  
04 July 2024  
0b8a24f673e94e6ea6a7a5b7e78399da



The information on the Erudus System has been supplied by the manufacturers of the products and, whilst the owners of the Erudus System take steps to ensure the information is regularly updated, they give no warranty and no guarantee that the information is accurate. Product information and ingredients may change, please always read product labels carefully in addition to using the information provided by Erudus One.

We do not accept liability for any inaccuracies or incorrect information contained on this site. Please visit <http://www.erudus.com/terms-and-conditions> for full terms and conditions.

## Strawberry Tart

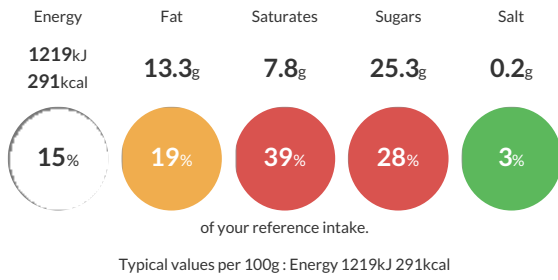
Short Product Name:  
Strawberry Tart

A pastry case filled with creamy crème patisserie topped with strawberries and a raspberry gel.

Traded Unit GTIN: **5016467002261** Internal GTIN: Supplier: **Aulds Delicious Desserts Ltd** Suppliers Product Code: **PD86**

### Reference Intake

Each 100g portion contains:



### Nutritional Information

Typical Values	Per 100g
Energy	1219kJ 291kCal
Carbohydrates	39.6g
of which sugars	25.3g
Fat	13.3g
of which saturates	7.8g
Fibre	1.1g
Protein	2.6g
Salt	0.2g

### Allergy Information

Key: **Contains** **May Contain**



### Dietary Information

Key: **Suitable for**



### Ingredients

Raspberry Gel [Glucose Syrup, Water, Sugar, Dextrose, Gelling Agent (E407), Colours (E163, Annatto Bixin), Acidity Regulators (E296, E331, E330), Flavouring], Strawberries (20%), Wheat Flour [**WHEAT** Flour, Calcium Carbonate, Iron, Niacin, Thiamin, Flour Treatment Agent (Fungal Amylase)], Dairy Cream (**MILK**)(12%), Butter(**MILK**), Icing Sugar, Custard Powder [Sugar, Modified Starch, Skimmed **MILK** Powder, Lactose and **MILK** Proteins (**MILK**), Vegetable Fat (Coconut), Gelling Agent (E339, E450, E516, E401), Flavouring (**MILK**), Flavouring, Colour (E160a(ii))], Margarine [Palm and Rapeseed Oil, Water, Emulsifier (E471)], Pasteurised Whole **EGG**, Modified Maize Starch, Dough Improver [**WHEAT** Flour (Calcium, Iron, Niacin, Thiamin), Rapeseed Oil, Flour Treatment Agent (E920)].