

Supplier's Product Code :  
Product Added :  
Last Updated by Supplier :  
erudus id :

12354501  
01 March 2018  
29 November 2022  
0e25ce9dad3242a18997521139c11e5d



The information on the **Erudus System** has been supplied by the manufacturers of the products and, whilst the owners of the Erudus System take steps to ensure the information is regularly updated, they give no warranty and no guarantee that the information is accurate. Product information and ingredients may change, please always read product labels carefully in addition to using the information provided by Erudus One.

We do not accept liability for any inaccuracies or incorrect information contained on this site. Please visit <http://www.erudus.com/terms-and-conditions> for full terms and conditions.

## KIT KAT CHUNKY 24x40g

Short Product Name:

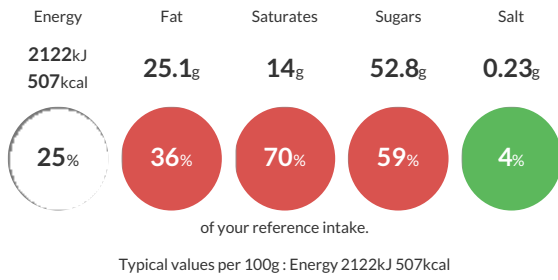
KIT KAT CHUNKY Milk Chocolate Bar 40g

Crispy wafer fingers covered with thick milk chocolate (68%)

Traded Unit GTIN: **7613035955103** Internal GTIN: **7613034954459** Supplier: **Nestle UK** Suppliers Product Code: **12354501**

### Reference Intake

Each 100g portion contains:



### Nutritional Information

Typical Values	Per 100g
Energy	2122kJ 507kCal
Carbohydrates	62.5g
of which sugars	52.8g
Fat	25.1g
of which saturates	14g
Fibre	2g
Protein	6.5g
Salt	0.23g

### Allergy Information

Key: **Contains** **May Contain**



### Dietary Information

Key: **Suitable for**



### Allergen Statement

For allergens, including **CEREALS** containing **GLUTEN**, see ingredients in **CAPITALS**.

### Ingredients

Sugar, Whole and skimmed **MILK** powder (13%), **WHEAT** flour (contains Calcium, Iron, Thiamin and Niacin), Cocoa mass (9%), Cocoa butter, Vegetable fats (from Palm kernel / Palm / Shea / Illipe / Mango kernel / Kokum gurgi / Sal), Lactose and proteins from whey (from **MILK**), Whey powder (from **MILK**), Emulsifiers (Sunflower lecithin, **SOYA** lecithin), Yeast, Raising agent (Sodium bicarbonate), Natural vanilla flavourings, Salt, Butterfat (from **MILK**), Natural flavourings.