

Supplier's Product Code :
 Product Added :
 Last Updated by Supplier :
 erudus id :

LF523C/CFLF523C
 17 April 2024
 17 April 2024
 0f8bfc49e2143ddb4ada28520d59e5d



The information on the **Erudus System** has been supplied by the manufacturers of the products and, whilst the owners of the Erudus System take steps to ensure the information is regularly updated, they give no warranty and no guarantee that the information is accurate. Product information and ingredients may change, please always read product labels carefully in addition to using the information provided by Erudus One.

We do not accept liability for any inaccuracies or incorrect information contained on this site. Please visit <http://www.erudus.com/terms-and-conditions> for full terms and conditions.

12" Deep Pan Pizza Crust (x 10)

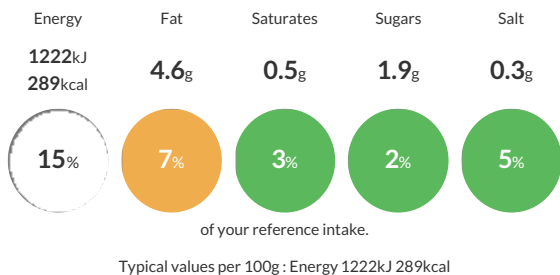
Short Product Name:
 Deep Pan Pizza Crust

Soft baked, round low fat 12 inch pizza base made from wheat flour.

Traded Unit GTIN: **05060286060025** Internal GTIN: Supplier: **Capri Foods Ltd** Suppliers Product Code: **LF523C/CFLF523C**

Reference Intake

Each 100g portion contains:



Nutritional Information

Typical Values	Per 100g
Energy	1222kJ 289kCal
Carbohydrates	53g
of which sugars	1.9g
Fat	4.6g
of which saturates	0.5g
Fibre	2g
Protein	7.9g
Salt	0.3g

Allergy Information

Key: **Contains** **May Contain**

Contains Cereal/Gluten	Does Not Contain Milk	Does Not Contain Eggs	Does Not Contain Peanuts	Does Not Contain Nuts	Does Not Contain Crustaceans	Does Not Contain Mustard
Does Not Contain Fish	Does Not Contain Lupin	Does Not Contain Sesame	Does Not Contain Celery	Does Not Contain Soya	Does Not Contain Molluscs	Does Not Contain Sulphur Dioxide

Dietary Information

Key: **Suitable for**

Suitable for Vegetarian	Suitable for Vegan	May not be suitable for Kosher	May not be suitable for Halal	NO DATA for Coeliac
-------------------------	--------------------	--------------------------------	-------------------------------	---------------------

Ingredients

WHEAT Flour (71%) (WHEAT Flour, Calcium Carbonate, Iron, Niacin, Thiamine), Water, Pre-mix [WHEAT Flour (WHEAT Flour, Calcium Carbonate, Niacin, Iron, Thiamine), Sugar, Potassium Chloride, Salt, Emulsifier- Mono and Diacetyltartaric acid Esters of Mono- and Diglycerides of Fatty Acids, Flour Treatment Agent- Ascorbic Acid], Rapeseed Oil, Yeast.