

Supplier's Product Code :
Product Added :
Last Updated by Supplier :
erudus id :

WS268
16 November 2018
14 February 2023
10a8c5a4e9564599a6d9a78d75598914



The information on the **Erudus System** has been supplied by the manufacturers of the products and, whilst the owners of the Erudus System take steps to ensure the information is regularly updated, they give no warranty and no guarantee that the information is accurate. Product information and ingredients may change, please always read product labels carefully in addition to using the information provided by Erudus One.

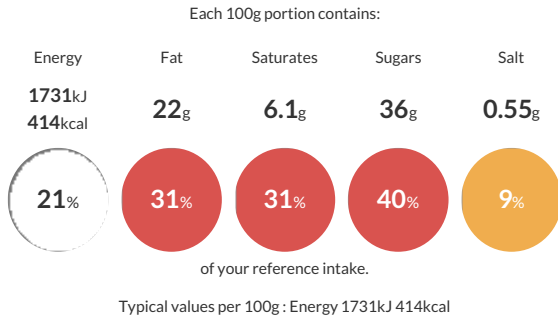
We do not accept liability for any inaccuracies or incorrect information contained on this site. Please visit <http://www.erudus.com/terms-and-conditions> for full terms and conditions.

SB Chocolate Drip cake

A frozen moist dark chocolate flavoured sponge, filled and covered with chocolate flavoured buttercream, dark chocolate flavoured drip affect, topping with chocolate flavoured buttercream blobs and Belgian chocolate curls.

Traded Unit GTIN: **5060082386022** Internal GTIN: Supplier : **Sussex Bakes Ltd T/A More Food** Suppliers Product Code : **WS268**

Reference Intake



Nutritional Information

Typical Values	Per 100g
Energy	1731kJ 414kCal
Carbohydrates	52g
of which sugars	36g
Fat	22g
of which saturates	6.1g
Fibre	3.4g
Protein	4.9g
Salt	0.55g

Allergy Information

Key: **Contains** **May Contain**



Dietary Information

Key: **Suitable for**



Ingredients

Sugar, Pasteurised Free Range **EGG**, Water, Fortified Wheat Flour (**WHEAT** Flour, Calcium Carbonate, Iron, Niacin, Thiamin), Rapeseed Oil, Butter (**MILK**), Fat Reduced Cocoa Powder, Dried Glucose Syrup, Whey Powder (**MILK**), Humectant (Glycerol), Wheat Starch, Raising Agents (Disodium Phosphates, Sodium Carbonates, Potassium Hydrogen Carbonate), Dark Chocolate Flavoured Coating Drizzle (Sugar, Palm Oil, Fat Reduced Cocoa Powder, Fortified Wheat Flour (**WHEAT** Flour, Calcium Carbonates, Iron, Niacin, Thiamin), Whey Powder (**MILK**), Emulsifiers (**SOYA** Lecithin, Polyglycerol Polyrinoleate), Flavouring), Belgian Milk Chocolate Curls (Sugar, Cocoa Mass, Cocoa Butter, Full Cream **MILK** Powder, Skimmed Milk Powder, Emulsifier (**SOYA** Lecithin), Flavouring), Modified Potato Starch, Emulsifiers (Mono- and Diglycerides of Fatty Acids, Sodium Stearoyl-2 Lactylate), **WHEAT** Gluten, Stabilisers (Sodium Carboxy Methyl Cellulose, Guar Gum), Flavouring.