

Supplier's Product Code :
Product Added :
Last Updated by Supplier :
erudus id :

1343
17 October 2024
17 October 2024
12a3b75f5c0940289745ca49f84355aa



The information on the **Erudus System** has been supplied by the manufacturers of the products and, whilst the owners of the Erudus System take steps to ensure the information is regularly updated, they give no warranty and no guarantee that the information is accurate. Product information and ingredients may change, please always read product labels carefully in addition to using the information provided by Erudus One.

We do not accept liability for any inaccuracies or incorrect information contained on this site. Please visit <http://www.erudus.com/terms-and-conditions> for full terms and conditions.

1343 - Tiramisu Slice (Pre-cut 12 Portion Slice)

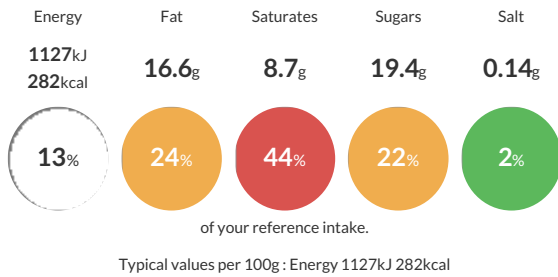
Short Product Name:
Tiramisu

A crunchy biscuit and chocolate base layered with a rich cream tiramisu between a layer of soaked Marsala sponge finished with a cocoa dusting

Traded Unit GTIN: **5060622441686** Internal GTIN: Supplier: **Eatons Patisserie** Suppliers Product Code: **1343**

Reference Intake

Each 100g portion contains:



Nutritional Information

Typical Values	Per 100g
Energy	1127kJ 282kCal
Carbohydrates	25.9g
of which sugars	19.4g
Fat	16.6g
of which saturates	8.7g
Fibre	0.8g
Protein	2.8g
Salt	0.14g

Allergy Information

Key: **Contains** **May Contain**



Dietary Information

Key: **Suitable for**



Ingredients

Mascarpone (24%) (Cream, **MILK** Protein Concentrate, Skimmed **MILK** Powder, Acidity Regulator: Citric Acid, Preservative: Potassium Sorbate, Nisin), Water, Cream (**MILK**), **WHEAT** Flour, Sugar, **EGG**, Raising Agents (Ammonium Hydrogen Carbonate, Sodium Hydrogen Carbonate, Disodium Diphosphate), Glucose Syrup, Flavouring, Salt, **WHEAT** Flour, **EGGS**, Sugar, Glucose Fructose Syrup, Stabiliser: Glycerol, Sorbitol, Sunflower Oil, Skimmed **MILK** Powder, Natural Flavour (Contains Alcohol), Salt, Raising Agents (Diphosphates, Sodium Carbonates), Emulsifiers (E471, E475), Custard [Skimmed **MILK**, Water, Sugar, Modified Maize Starch, Palm Oil, Butter **MILK** Powder, Whey Powder (From **MILK**), Flavouring, Colours (Curcumin, Annatto Norbixin)], Sugar, Marsala Fine Wine (2%) [**SULPHITES**], Kahlua [Sugar, Rum, Arabica Coffee, Caramel Colour, Vanillin], Stabiliser For Fresh Cream [Sugar, Maltodextrin, Modified Starch [Acetylated Distarch Adipate E1422], Thickener [Carrageenan E407]], Icing Sugar [Anti Caking Agent (Tricalcium Phosphate E341iii)], Amaretto Veroni (Water, Sugar, Alcohol, Flavours), Fat Reduced Cocoa Powder (Cocoa Solids 90%), Acidity Regulator: Potassium Carbonate, Coffee.