

Supplier's Product Code :  
Product Added :  
Last Updated by Supplier :  
erudus id :

960802  
16 January 2025  
16 January 2025  
134c9a969d0b43f084f63c4bba155aa4



The information on the **Erudus System** has been supplied by the manufacturers of the products and, whilst the owners of the Erudus System take steps to ensure the information is regularly updated, they give no warranty and no guarantee that the information is accurate. Product information and ingredients may change, please always read product labels carefully in addition to using the information provided by Erudus One.

We do not accept liability for any inaccuracies or incorrect information contained on this site. Please visit <http://www.erudus.com/terms-and-conditions> for full terms and conditions.

## CADBURY CHOCOLATE DRINK 2000G FT 6CA

**Warning!** This Product Specification complies with EU Food Information Regulation No. 1169/2011 (FIR) however we are still awaiting further product attributes to complete the full Erudus specification.

Short Product Name:

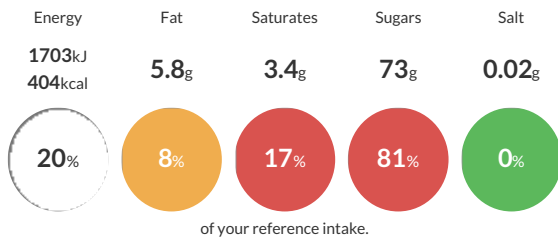
CADBURY CHOCOLATE DRINK 2000G FT

Drinking chocolate.

Traded Unit GTIN: **05034660514411** Internal GTIN: **05034660022190** Supplier : **Mondelez UK Ltd** Suppliers Product Code : **960802**

### Reference Intake

Each 100ml portion contains:



Typical values per 100ml: Energy 1703kJ 404kcal

### Nutritional Information

Typical Values	Per 100ml
Energy	1703kJ 404kCal
Carbohydrates	76g
of which sugars	73g
Fat	5.8g
of which saturates	3.4g
Fibre	9.3g
Protein	6.4g
Salt	0.02g

### Allergy Information

Key: **Contains** **May Contain**



#### Allergen Statement

Cocoa solids: 25% minimum. **MAY CONTAIN MILK.**

### Ingredients

Ingredients: Sugar, cocoa powder, acidity regulator (potassium carbonates), flavouring.

### Dietary Information

Key: **Suitable for**

