

Supplier's Product Code : 62740466
 Product Added : 10 June 2024
 Last Updated by Supplier : 10 June 2024
 erudus id : 136c2f52243646d7ad4e1b81fd57c3fa



The information on the **Erudus System** has been supplied by the manufacturers of the products and, whilst the owners of the Erudus System take steps to ensure the information is regularly updated, they give no warranty and no guarantee that the information is accurate. Product information and ingredients may change, please always read product labels carefully in addition to using the information provided by Erudus One.

We do not accept liability for any inaccuracies or incorrect information contained on this site. Please visit <http://www.erudus.com/terms-and-conditions> for full terms and conditions.

Ben & Jerry's Ice Cream Non-Dairy Cookie on Cookie Dough 100 ML

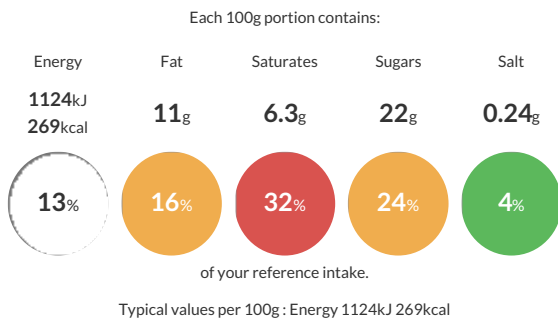
Short Product Name:

Ben & Jerry's Ice Cream Non-Dairy Cookie on Cookie Dough 100 ML

Non-dairy caramel ice cream with cookie swirls (10%), and chocolate chip cookie dough (16%)

Traded Unit GTIN: **8711327626164** Internal GTIN: **8711327626133** Supplier: **Unilever UK Limited** Suppliers Product Code: **62740466**

Reference Intake



Nutritional Information

Typical Values	Per 100g
Energy	1124kJ 269kCal
Carbohydrates	40g
of which sugars	22g
Fat	11g
of which saturates	6.3g
Fibre	-g
Protein	1.8g
Salt	0.24g

Allergy Information

Key: **Contains** **May Contain**

Contains Cereal/Gluten	Does Not Contain Milk	Does Not Contain Eggs	Does Not Contain Peanuts	Does Not Contain Nuts	Does Not Contain Crustaceans	Does Not Contain Mustard
Does Not Contain Fish	Does Not Contain Lupin	Does Not Contain Sesame	Does Not Contain Celery	Contains Soya	Does Not Contain Molluscs	Does Not Contain Sulphur Dioxide

Dietary Information

Key: **Suitable for**

Suitable for Vegetarian	NO DATA for Vegan	Suitable for Kosher	Suitable for Halal	NO DATA for Coeliac
-------------------------	-------------------	---------------------	--------------------	---------------------

Allergen Statement

> Sugar, cocoa, vanilla: mass balance is used to match Fairtrade sourcing. Total 21%F. FVisit info.fairtrade.net/sourcing

Ingredients

Ingredients: Water, sugar, glucose syrup, flours (**WHEAT**, whole **WHEAT**), oat syrup (water, **OATS** (2.5%)), coconut fat, vegetable oils (fully refined soybean, rapeseed), brown sugar, corn starch, cocoa mass, pea protein, cocoa butter, fava bean protein, salt, stabilisers (guar gum, locust bean gum), molasses, emulsifiers (lecithins (contain **SOY**)), vanilla extract, raising agent (sodium bicarbonate). >