

Supplier's Product Code :  
Product Added :  
Last Updated by Supplier :  
erudus id :

KB7510  
25 May 2022  
05 April 2024  
14a6097d8c9a4959874467478ffc0e4e



The information on the **Erudus System** has been supplied by the manufacturers of the products and, whilst the owners of the Erudus System take steps to ensure the information is regularly updated, they give no warranty and no guarantee that the information is accurate. Product information and ingredients may change, please always read product labels carefully in addition to using the information provided by Erudus One.

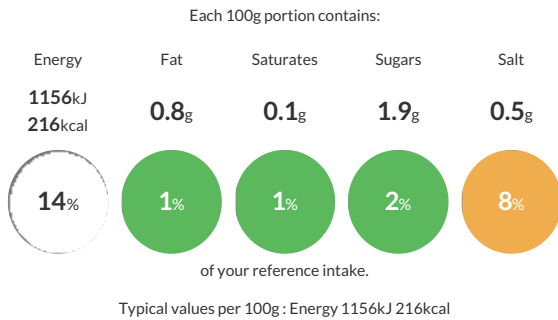
We do not accept liability for any inaccuracies or incorrect information contained on this site. Please visit <http://www.erudus.com/terms-and-conditions> for full terms and conditions.

## Lebanese Flatbread 10" (72g) (1 x 125)

Traditional, round-shaped flatbread (khobez), ideal for use as an alternative sandwich carrier, posh pizza base or warm and serve as an accompaniment. Packed 25 x 5. Suitable for vegetarians and vegans. Halal approved. Defrosted shelf-life = 3 days (unopened). (1 x 125)

Traded Unit GTIN: **05060062473650** Internal GTIN: Supplier: **Central Foods Group Ltd** Suppliers Product Code: **KB7510**

### Reference Intake



### Nutritional Information

Typical Values	Per 100g
Energy	1156kJ 216kCal
Carbohydrates	44.3g
of which sugars	1.9g
Fat	0.8g
of which saturates	0.1g
Fibre	1.4g
Protein	6.8g
Salt	0.5g

### Allergy Information

Key: **Contains** **May Contain**



#### Allergen Statement

For allergens, including cereals containing gluten, see ingredients in **CAPITALS**.

### Ingredients

**WHEAT** Flour, Water, Yeast, Sugar, Salt.

### Dietary Information

Key: **Suitable for**

