

Supplier's Product Code :
Product Added :
Last Updated by Supplier :
erudus id :

F03010 (7890)
22 July 2009
16 November 2022
14bef81fc2ae4446aefad3bcef3d1607



The information on the **Erudus System** has been supplied by the manufacturers of the products and, whilst the owners of the Erudus System take steps to ensure the information is regularly updated, they give no warranty and no guarantee that the information is accurate. Product information and ingredients may change, please always read product labels carefully in addition to using the information provided by Erudus One.

We do not accept liability for any inaccuracies or incorrect information contained on this site. Please visit <http://www.erudus.com/terms-and-conditions> for full terms and conditions.

Chocolate Fudge Cake 2 Layer Gateau

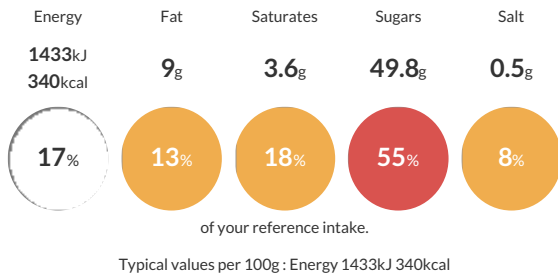
Short Product Name:
Chocolate Fudge Cake

A two-layer gateau made with a light textured chocolate sponge, filled and covered with chocolate fudge icing decorated with a swirled pattern. Whole

Traded Unit GTIN: **05010823510216** Internal GTIN: **5010823100936** Supplier: **Mademoiselle Desserts (Taunton)** Suppliers Product Code: **F03010 (7890)**

Reference Intake

Each 100g portion contains:



Nutritional Information

Typical Values	Per 100g
Energy	1433kJ 340kCal
Carbohydrates	60.6g
of which sugars	49.8g
Fat	9g
of which saturates	3.6g
Fibre	2.9g
Protein	4.3g
Salt	0.5g

Allergy Information

Key: **Contains** **May Contain**



Dietary Information

Key: **Suitable for**



Allergen Statement

For allergens, including cereals containing gluten, see ingredients in **CAPITALS**.
May contain traces of nuts. Suitable for vegetarians.

Ingredients

Chocolate Fudge (53.5%) [Sugar, Water, Shortening (Palm Oil, Rapeseed Oil, Emulsifier (E471)), Fat Reduced Cocoa Powder (5.5%), Glucose Syrup, Emulsifiers (E471, E475)], Sugar, **WHEAT** Flour (with Calcium Carbonate, Iron, Niacin, Thiamin), Whole **EGG**, Water, Fat Reduced Cocoa Powder (2%), Raising Agents (E450i, E500ii), Whey Powder (**MILK**), Skimmed **MILK** Powder, Emulsifiers (E471, E475), Modified Potato Starch, **WHEAT** Flour, Stabilisers (E415, E412), Dextrose.