

Supplier's Product Code :  
 Product Added :  
 Last Updated by Supplier :  
 erudus id :

1571  
 15 July 2022  
 08 November 2022  
 14d7ec19d5dd43fe8362089ec99297e9



The information on the **Erudus System** has been supplied by the manufacturers of the products and, whilst the owners of the Erudus System take steps to ensure the information is regularly updated, they give no warranty and no guarantee that the information is accurate. Product information and ingredients may change, please always read product labels carefully in addition to using the information provided by Erudus One.

We do not accept liability for any inaccuracies or incorrect information contained on this site. Please visit <http://www.erudus.com/terms-and-conditions> for full terms and conditions.

## Caramel Dulce de Leche Cheesecake

Short Product Name:

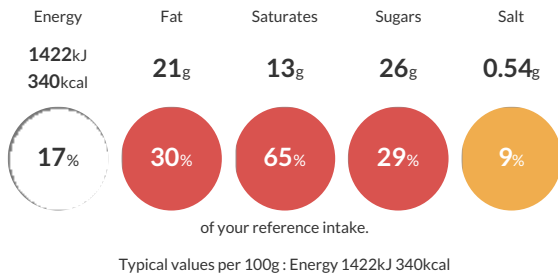
Caramel Dulce de Leche Cheesecake

A tango of tantalizing tastes! Dulce caramel-infused cheese entwined with gooey pockets of dulce and a chewy marbling on top. All awhirl in a creamy white chocolate cheesecake.

Traded Unit GTIN: **10749017015719** Internal GTIN: **0749017015712** Supplier : **Sweet Street Desserts** Suppliers Product Code : **1571**

### Reference Intake

Each 100g portion contains:



### Nutritional Information

| Typical Values     | Per 100g          |
|--------------------|-------------------|
| Energy             | 1422kJ<br>340kCal |
| Carbohydrates      | 33g               |
| of which sugars    | 26g               |
| Fat                | 21g               |
| of which saturates | 13g               |
| Fibre              | 0g                |
| Protein            | 5g                |
| Salt               | 0.54g             |

### Allergy Information

Key: **Contains** **May Contain**



### Dietary Information

Key: **Suitable for**



### Allergen Statement

For allergens, see ingredients that are capitalized.

May contain traces of **PEANUTS, MACADAMIA NUTS, PECAN NUTS, WALNUTS, ALMOND NUTS**

### Ingredients

**CREAM CHEESE** (31.78%) [pasteurized **MILK** and **CREAM**, salt, cheese cultures], caramel (22.36%) [**MILK**, sugar, **BUTTER (MILK)**], white confectionary [sugar, palm kernel oil, palm oil, **WHEY (MILK)**, nonfat **MILK**, emulsifier (E322 (**SOY**)), vanilla], **EGGS**, margarine [**SOYBEAN** oil, palm oil, water, salt, emulsifier (E471), nonfat dry **MILK**, emulsifier (E322 (sunflower)), natural flavour, vitamin A palmitate, colour (E160a)], sugar, **GRAHAM** crumbs [**WHEAT** flour, **GRAHAM** flour, sugar, palm oil, brown sugar, honey, salt, baking soda, natural flavour], sour **CREAM** [cultured **CREAM (MILK)**, nonfat **MILK**, enzymes], **WHEAT** flour, **CREAM (MILK)**, brown sugar, water, **OATS**, neutral glaze [glucose, water, fructose, invert sugar, sugar, emulsifier (E440), acidity regulator (E330), stabilizer (E415), emulsifier (E450iii)], thickener (E1422), **SOYBEAN** oil, corn starch, natural Madagascar vanilla flavour, emulsifier (E440), salt.