

Supplier's Product Code :
Product Added :
Last Updated by Supplier :
erudus id :

CHK-R30GOLD-E4-U70
18 May 2020
18 May 2020
16b5717c455a472d9edc7a4b46329063



The information on the Erudus System has been supplied by the manufacturers of the products and, whilst the owners of the Erudus System take steps to ensure the information is regularly updated, they give no warranty and no guarantee that the information is accurate. Product information and ingredients may change, please always read product labels carefully in addition to using the information provided by Erudus One.

We do not accept liability for any inaccuracies or incorrect information contained on this site. Please visit <http://www.erudus.com/terms-and-conditions> for full terms and conditions.

WHITE CHOCOLATE WITH CARAMEL 4 x 2.5kg

Short Product Name:

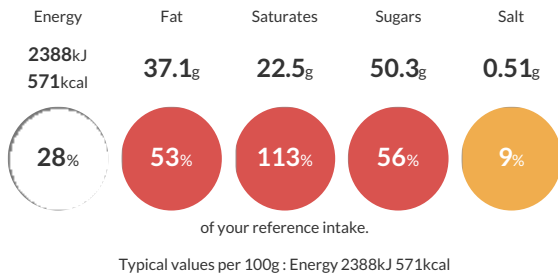
WHITE CHOCOLATE WITH CARAMEL

The new colour and taste in Finest Belgian Chocolate

Traded Unit GTIN: 5410522555240 Internal GTIN: 5410522555257 Supplier: Barry Callebaut Belgium NV & IBC Belgium Suppliers Product Code: CHK-R30GOLD-E4-U70

Reference Intake

Each 100g portion contains:



Nutritional Information

Typical Values	Per 100g
Energy	2388kJ 571kCal
Carbohydrates	50.8g
of which sugars	50.3g
Fat	37.1g
of which saturates	22.5g
Fibre	0g
Protein	8g
Salt	0.51g

Allergy Information

Key: Contains May Contain



Allergen Statement

Contains MILK

Ingredients

Sugar 29.0%, Cocoa butter 30.0%, Whole MILK powder 25.0%, MILK sugar 5.5%, Whey powder (MILK) 5.0%, Skimmed MILK powder 2.5%, Caramelised sugar 2.0%, Emulsifier SOYA lecithin <1%, Natural vanilla Flavouring <1%, Salt <1%

Dietary Information

Key: Suitable for

