

Supplier's Product Code :
Product Added :
Last Updated by Supplier :
erudus id :

5790008009 (Q009)
29 July 2008
12 December 2022
18a2e0fe35ee41689806ca67163f91d9



The information on the **Erudus System** has been supplied by the manufacturers of the products and, whilst the owners of the Erudus System take steps to ensure the information is regularly updated, they give no warranty and no guarantee that the information is accurate. Product information and ingredients may change, please always read product labels carefully in addition to using the information provided by Erudus One.

We do not accept liability for any inaccuracies or incorrect information contained on this site. Please visit <http://www.erudus.com/terms-and-conditions> for full terms and conditions.

Chocolate Croissant

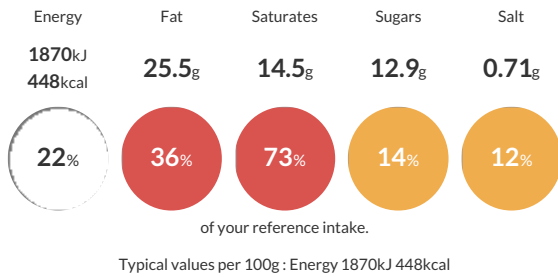
Short Product Name:
Chocolate Croissant

An unbaked, frozen, pre-proved all butter croissant with a chocolate filling, topped with chocolate nibs.

Traded Unit GTIN: **05413056003911** Internal GTIN: Supplier: **Lantmannen Unibake** Suppliers Product Code: **5790008009 (Q009)**

Reference Intake

Each 100g portion contains:



Nutritional Information

Typical Values	Per 100g
Energy	1870kJ 448kCal
Carbohydrates	44g
of which sugars	12.9g
Fat	25.5g
of which saturates	14.5g
Fibre	3g
Protein	9g
Salt	0.71g

Allergy Information

Key: **Contains** **May Contain**



Dietary Information

Key: **Suitable for**



Allergen Statement

For allergens, including cereals containing gluten, see ingredients in capitals. May also contain traces of nuts.

Ingredients

Dough: **WHEAT** Flour (**WHEAT** Gluten, Flour Treatment Agent (Ascorbic Acid E300)), Butter (**MILK**) (16%), Water, Yeast, Sugar, Salt, Baking Improver (**WHEAT** Gluten, **WHEAT** Flour, Flour Treatment Agent (Ascorbic Acid E300)), **EGG**.

Filling: Chocolate Flavoured Filling (19%) (Sugar, Sunflower Oil, Fat Reduced Cocoa Powder, Palm Fat, Skimmed **MILK** Powder, Emulsifier (**SOYA** Lecithin E322), Antioxidant (Rosemary Extract E392)).

Topping: Chocolate (4%) (cocoa solids 35% minimum) (Sugar, Cocoa Mass, Cocoa Butter, Emulsifier (**SOYA** Lecithin E322)), **EGG**.