

Supplier's Product Code :  
Product Added :  
Last Updated by Supplier :  
erudus id :

F10186  
29 October 2024  
29 October 2024  
1b474bc85e8840f1aeea09eee20e89d7



The information on the Erudus System has been supplied by the manufacturers of the products and, whilst the owners of the Erudus System take steps to ensure the information is regularly updated, they give no warranty and no guarantee that the information is accurate. Product information and ingredients may change, please always read product labels carefully in addition to using the information provided by Erudus One.

We do not accept liability for any inaccuracies or incorrect information contained on this site. Please visit <http://www.erudus.com/terms-and-conditions> for full terms and conditions.

## Jude's Plant Based Strawberry Ice Cream 24 x 100ml

Short Product Name:

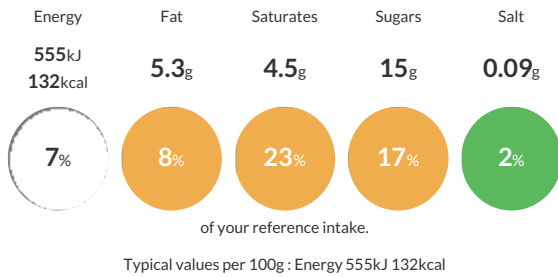
Jude's Plant Based Strawberry Ice Cream - 24 x 100ml

Vegan Strawberry Ice cream

Traded Unit GTIN: 05060081115609 Internal GTIN: 5060081115739 Supplier: Judes Ices Suppliers Product Code: F10186

### Reference Intake

Each 100g portion contains:



### Nutritional Information

Typical Values	Per 100g
Energy	555kJ 132kCal
Carbohydrates	20g
of which sugars	15g
Fat	5.3g
of which saturates	4.5g
Fibre	-g
Protein	0.7g
Salt	0.09g

### Allergy Information

Key: **Contains** **May Contain**



#### Allergen Statement

For allergens see ingredients in bold. May also contain traces of milk and egg.

### Ingredients

water, strawberries in syrup (14%) [strawberries (56%), sugar, water, gelling agent (pectin)], glucose syrup, sugar, coconut oil, strawberry puree (4%), soluble corn fibre, <b>soya</b> protein isolate, dextrose, emulsifier (mono- and diglycerides of fatty acids), stabilisers (locust bean gum, guar gum), natural flavourings, natural colours (red beet extract, spirulina extract) citric acid, sea salt.

### Dietary Information

Key: **Suitable for**

