

Supplier's Product Code :  
Product Added :  
Last Updated by Supplier :  
erudus id :

HSDC10012  
18 July 2024  
18 July 2024  
1b758b0c2a924f2c95f211a351bcdbaa



The information on the [Erudus System](#) has been supplied by the manufacturers of the products and, whilst the owners of the Erudus System take steps to ensure the information is regularly updated, they give no warranty and no guarantee that the information is accurate. Product information and ingredients may change, please always read product labels carefully in addition to using the information provided by Erudus One.

We do not accept liability for any inaccuracies or incorrect information contained on this site. Please visit <http://www.erudus.com/terms-and-conditions> for full terms and conditions.

## Hackney Gelato Rich Chocolate Sorbetto 100ml

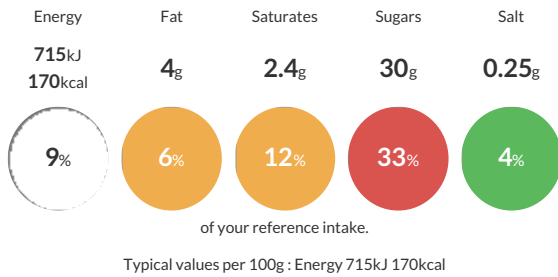
Short Product Name:  
Rich Chocolate Sorbetto

This sorbetto is made with an intense Belgian dark chocolate. It's smoother than a freshly shelled conker and rich enough to own its own yacht.

Traded Unit GTIN: **15060540310481** Internal GTIN: **5060540310484** Supplier : **Hackney Gelato** Suppliers Product Code : **HSDC10012**

### Reference Intake

Each 100g portion contains:



### Nutritional Information

| Typical Values     | Per 100g         |
|--------------------|------------------|
| Energy             | 715kJ<br>170kCal |
| Carbohydrates      | 30.2g            |
| of which sugars    | 30g              |
| Fat                | 4g               |
| of which saturates | 2.4g             |
| Fibre              | -g               |
| Protein            | 2g               |
| Salt               | 0.25g            |

### Allergy Information

Key: **Contains** **May Contain**



### Dietary Information

Key: **Suitable for**



#### Allergen Statement

Contains Soy Lecithin. Made in a kitchen that also handles milk, egg, sesame, sulphites, nuts, peanuts and gluten.

### Ingredients

Water, sugar, dextrose, Belgian dark chocolate 7% (cocoa mass, sugar, reduced fat cocoa powder, **SOY** lecithin, natural vanilla flavour), pure cocoa powder, stabilisers (locust bean gum, guar gum, carrageenan), emulsifier (mono and diglycerides of fatty acids), sea salt.