

Supplier's Product Code :  
Product Added :  
Last Updated by Supplier :  
erudus id :

823-E4-U71  
25 March 2020  
15 February 2023  
1ba9e1da65ed470fb13a6970895fae06



The information on the **Erudus System** has been supplied by the manufacturers of the products and, whilst the owners of the Erudus System take steps to ensure the information is regularly updated, they give no warranty and no guarantee that the information is accurate. Product information and ingredients may change, please always read product labels carefully in addition to using the information provided by Erudus One.

We do not accept liability for any inaccuracies or incorrect information contained on this site. Please visit <http://www.erudus.com/terms-and-conditions> for full terms and conditions.

## COUVERTURE MILK CHOCOLATE

Short Product Name:

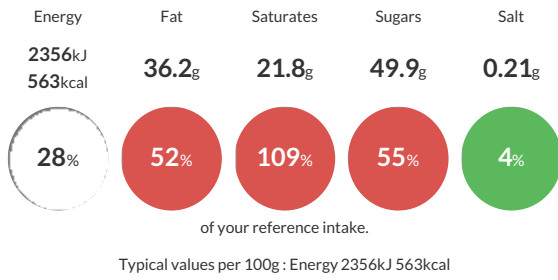
COUVERTURE MILK CHOCOLATE

FINEST BELGIAN MILK COUVERTURE CHOCOLATE

Traded Unit GTIN: **5410522513523** Internal GTIN: **5410522513530** Supplier: **Barry Callebaut Belgium NV & IBC Belgium** Suppliers Product Code: **823-E4-U71**

### Reference Intake

Each 100g portion contains:



### Nutritional Information

Typical Values	Per 100g
Energy	2356kJ 563kCal
Carbohydrates	50.9g
of which sugars	49.9g
Fat	36.2g
of which saturates	21.8g
Fibre	2.1g
Protein	7g
Salt	0.21g

### Allergy Information

Key: **Contains** **May Contain**



### Dietary Information

Key: **Suitable for**



### Ingredients

Cocoa Mass 11.0%, Sugar 42.0%, Cocoa butter 24.0%, Whole MILK powder 22.5%, Emulsifier SOYA lecithin <1%, Natural vanilla Flavouring <1%