

Supplier's Product Code :
Product Added :
Last Updated by Supplier :
erudus id :

NS600
17 February 2017
15 February 2023
1bac469c7bb2423e86aa5b1697e9fc26



The information on the **Erudus System** has been supplied by the manufacturers of the products and, whilst the owners of the Erudus System take steps to ensure the information is regularly updated, they give no warranty and no guarantee that the information is accurate. Product information and ingredients may change, please always read product labels carefully in addition to using the information provided by Erudus One.

We do not accept liability for any inaccuracies or incorrect information contained on this site. Please visit <http://www.erudus.com/terms-and-conditions> for full terms and conditions.

NIC Salted Caramel Topping Sauce

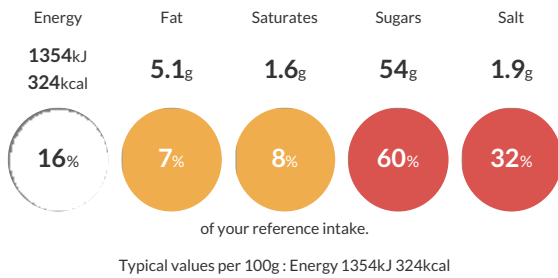
Short Product Name:

Topping sauce for use on ice cream and desserts Previous supplier product code: 3567

Traded Unit GTIN: **07394379881241** Internal GTIN: **07394379881234** Supplier : **Nic Ice Ltd** Suppliers Product Code : **NS600**

Reference Intake

Each 100g portion contains:



Nutritional Information

Typical Values	Per 100g
Energy	1354kJ 324kCal
Carbohydrates	68g
of which sugars	54g
Fat	5.1g
of which saturates	1.6g
Fibre	-g
Protein	3.1g
Salt	1.9g

Allergy Information

Key: **Contains** **May Contain**



Allergen Statement

For allergens including cereals containing gluten, see **CAPITALISED / BOLD** ingredients.

Ingredients

Glucose Syrup, Sugar, Water, Skimmed **MILK** Powder, Vegetable Fat (Shea), Sea Salt, Flavour, Emulsifier (**SOYA** Lecithin E322), Preservative (Potassium Sorbate E202).

Dietary Information

Key: **Suitable for**

