

Supplier's Product Code :  
 Product Added :  
 Last Updated by Supplier :  
 erudus id :

FI0180  
 20 November 2024  
 20 November 2024  
 1c5c493a68644c6e8805fb1f39b3d64c



The information on the **Erudus System** has been supplied by the manufacturers of the products and, whilst the owners of the Erudus System take steps to ensure the information is regularly updated, they give no warranty and no guarantee that the information is accurate. Product information and ingredients may change, please always read product labels carefully in addition to using the information provided by Erudus One.

We do not accept liability for any inaccuracies or incorrect information contained on this site. Please visit <http://www.erudus.com/terms-and-conditions> for full terms and conditions.

## Jude's Plant Based Mint Chocolate Ice Cream - 24 x 100ml

Short Product Name:

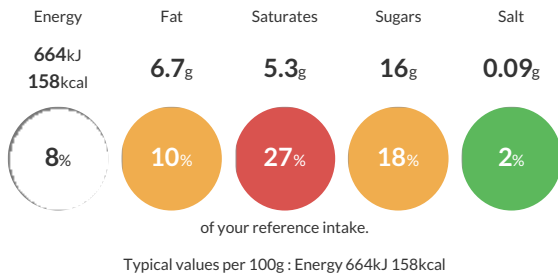
Jude's Plant Based Mint Chocolate Ice Cream - 24 x 100ml

Plant Based Mint Ice Cream With Chocolate Pieces And Chocolate Sauce

Traded Unit GTIN: **05060081115586** Internal GTIN: **5060081115494** Supplier: **Judes Ices** Suppliers Product Code: **FI0180**

### Reference Intake

Each 100g portion contains:



### Nutritional Information

Typical Values	Per 100g
Energy	664kJ 158kCal
Carbohydrates	23g
of which sugars	16g
Fat	6.7g
of which saturates	5.3g
Fibre	-g
Protein	0.9g
Salt	0.09g

### Allergy Information

Key: **Contains** **May Contain**

Does Not Contain Cereal/Gluten	May Contain Milk	May Contain Eggs	Does Not Contain Peanuts	Does Not Contain Nuts	Does Not Contain Crustaceans	Does Not Contain Mustard
Does Not Contain Fish	Does Not Contain Lupin	Does Not Contain Sesame	Does Not Contain Celery	Contains Soya	Does Not Contain Molluscs	Does Not Contain Sulphur Dioxide

### Dietary Information

Key: **Suitable for**

Suitable for Vegetarian	Suitable for Vegan	May not be suitable for Kosher	May not be suitable for Halal	NO DATA for Coeliac
-------------------------	--------------------	--------------------------------	-------------------------------	---------------------

### Allergen Statement

For allergens see ingredients in bold. May contain milk.

### Ingredients

water, chocolate sauce (13%) [sugar, water, chocolate (15%) (cocoa mass, sugar, cocoa butter, emulsifier (<b>soya</b> lecithin), flavourings, pectin), glucose syrup, glucose-fructose syrup, inulin, fat reduced cocoa powder, salt], glucose syrup, sugar, coconut oil, chocolate pieces (3.6%) [sugar, cocoa mass, cocoa butter, emulsifier (<b>soya</b> lecithin), natural vanilla flavouring], soluble corn fibre, <b>soya</b> protein isolate, dextrose, emulsifier (mono- and diglycerides of fatty acids), stabilisers (locust bean gum, guar gum), sea salt, English peppermint oil, colours (chlorophyllins, curcumin).