

Supplier's Product Code :  
 Product Added :  
 Last Updated by Supplier :  
 erudus id :

41367  
 20 May 2024  
 20 May 2024  
 1e0040104b3d47ec8a386a5b4dad52a6



The information on the **Erudus System** has been supplied by the manufacturers of the products and, whilst the owners of the Erudus System take steps to ensure the information is regularly updated, they give no warranty and no guarantee that the information is accurate. Product information and ingredients may change, please always read product labels carefully in addition to using the information provided by Erudus One.

We do not accept liability for any inaccuracies or incorrect information contained on this site. Please visit <http://www.erudus.com/terms-and-conditions> for full terms and conditions.

## 30cm Mission OOH Beetroot & Chia Tortilla 4 x 18ct

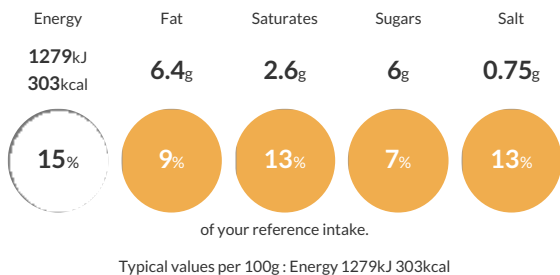
Short Product Name:  
 Beetroot & Chia Tortilla

30cm Mission OOH Beetroot & Chia Tortilla 4 x 18ct 1620g Frozen

Traded Unit GTIN: **05036034006218** Internal GTIN: Supplier: **Mission Foods (Coventry)** Suppliers Product Code: **41367**

### Reference Intake

Each 100g portion contains:



### Nutritional Information

Typical Values	Per 100g
Energy	1279kJ 303kCal
Carbohydrates	50.3g
of which sugars	6g
Fat	6.4g
of which saturates	2.6g
Fibre	5.3g
Protein	8.5g
Salt	0.75g

### Allergy Information

Key: **Contains** **May Contain**

Contains Cereal/Gluten	Does Not Contain Milk	Does Not Contain Eggs	Does Not Contain Peanuts	Does Not Contain Nuts	Does Not Contain Crustaceans	Does Not Contain Mustard
Does Not Contain Fish	Does Not Contain Lupin	Does Not Contain Sesame	Does Not Contain Celery	Does Not Contain Soya	Does Not Contain Molluscs	Does Not Contain Sulphur Dioxide

### Dietary Information

Key: **Suitable for**

Suitable for Vegetarian	Suitable for Vegan	May not be suitable for Kosher	May not be suitable for Halal	NO DATA for Coeliac

### Ingredients

Fortified **WHEAT** Flour (**WHEAT** Flour, Calcium Carbonate, Iron, Niacin, Thiamin), Water, Beetroot Powder (8%), Vegetable Oils (Palm Oil, Rapeseed Oil), Chia Seed (1.5%), Raising Agents (Sodium Carbonates, Diphosphates), Sugar, Acidity Regulator (Malic Acid), Salt, Flour Treatment Agent (L-Cysteine).