

Supplier's Product Code :
Product Added :
Last Updated by Supplier :
erudus id :

F02163
25 June 2018
02 March 2023
1e243797da9243cdbc0f5fd36e89a016



The information on the **Erudus System** has been supplied by the manufacturers of the products and, whilst the owners of the Erudus System take steps to ensure the information is regularly updated, they give no warranty and no guarantee that the information is accurate. Product information and ingredients may change, please always read product labels carefully in addition to using the information provided by Erudus One.

We do not accept liability for any inaccuracies or incorrect information contained on this site. Please visit <http://www.erudus.com/terms-and-conditions> for full terms and conditions.

Blueberry Tulip Muffin

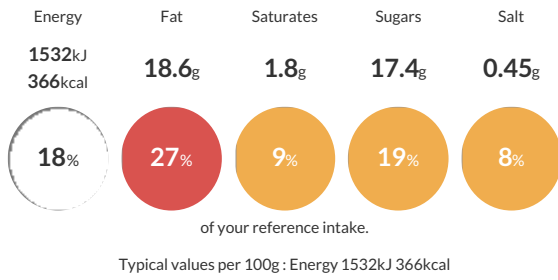
Short Product Name:
Blueberry Tulip Muffin

A blueberry flavoured muffin, filled with sweet blueberries.

Traded Unit GTIN: **05010066121637** Internal GTIN: Supplier: **Kara Foodservice (Fletchers)** Suppliers Product Code: **F02163**

Reference Intake

Each 100g portion contains:



Nutritional Information

Typical Values	Per 100g
Energy	1532kJ 366kCal
Carbohydrates	44.7g
of which sugars	17.4g
Fat	18.6g
of which saturates	1.8g
Fibre	0.7g
Protein	4.6g
Salt	0.45g

Allergy Information

Key: **Contains** **May Contain**



Dietary Information

Key: **Suitable for**



Allergen Statement

For allergens, including cereals containing gluten, see ingredients in bold. Also, may contain sesame and soya.

Ingredients

Wheat Flour (**WHEAT** Flour, Calcium Carbonate, Iron, Niacin, Thiamin), Rapeseed Oil, Sugar, **EGG**, Blueberries (13%), Glycerine, Cornflour, Water, **EGG** White, Raising Agents (E450, E501), Maltodextrin, Whey Powder (**MILK**), Flavouring, Emulsifier (E471), Salt.