

Supplier's Product Code :
Product Added :
Last Updated by Supplier :
erudus id :

619049
25 July 2024
25 July 2024
1f99b23d5856476e8b3c8d5357a45ea4



The information on the **Erudus System** has been supplied by the manufacturers of the products and, whilst the owners of the Erudus System take steps to ensure the information is regularly updated, they give no warranty and no guarantee that the information is accurate. Product information and ingredients may change, please always read product labels carefully in addition to using the information provided by Erudus One.

We do not accept liability for any inaccuracies or incorrect information contained on this site. Please visit <http://www.erudus.com/terms-and-conditions> for full terms and conditions.

LEE KUM KEE PREMIUM DARK SOY SAUCE 2X1.9LTR

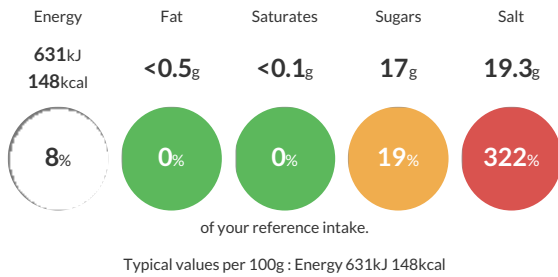
Short Product Name:
DARK SOY SAUCE

Lee Kum Kee Premium Dark Soy Sauce The Professional Range is naturally brewed using traditional methods to accentuate for a deep colour and lustre.

Traded Unit GTIN: **60078895127975** Internal GTIN: **0078895127973** Supplier : **Petty Wood & Co** Suppliers Product Code : **619049**

Reference Intake

Each 100g portion contains:



Nutritional Information

Typical Values	Per 100g
Energy	631kJ 148kCal
Carbohydrates	31g
of which sugars	17g
Fat	<0.5g
of which saturates	<0.1g
Fibre	0g
Protein	6.1g
Salt	19.3g

Allergy Information

Key: **Contains** **May Contain**



Allergen Statement

for allergens see products in bold/capitals

Ingredients

Water, Salt, Colour (Plain Caramel), Sugar, Defatted **SOYBEANS 10%**, **WHEAT**.

Dietary Information

Key: **Suitable for**

