

The information on the [Erudus System](#) has been supplied by the manufacturers of the products and, whilst the owners of the Erudus System take steps to ensure the information is regularly updated, they give no warranty and no guarantee that the information is accurate. Product information and ingredients may change, please always read product labels carefully in addition to using the information provided by Erudus One.

We do not accept liability for any inaccuracies or incorrect information contained on this site. Please visit <http://www.erudus.com/terms-and-conditions> for full terms and conditions.

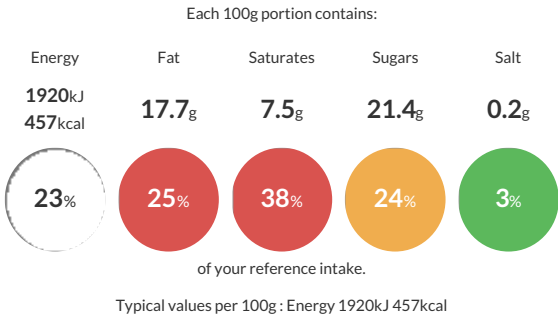
Crumble Mix (2020 Sugar Compliant) 4 x 3.5kg

Short Product Name:
Crumble Mix

A rich crumble mix suitable for use as crumble topping straight from the bag. *No mixing required*

Traded Unit GTIN: 5028081002909 Internal GTIN: 5028081002381 Supplier : Middleton Foods Suppliers Product Code : CM0005

Reference Intake



Nutritional Information

Typical Values	Per 100g
Energy	1920kJ 457kCal
Carbohydrates	69g
of which sugars	21.4g
Fat	17.7g
of which saturates	7.5g
Fibre	3.1g
Protein	5.9g
Salt	0.2g

Allergy Information

Key: Contains May Contain


Contains
Cereal/Gluten


May Contain
Milk


May Contain
Eggs


Does Not
Contain
Peanuts


Does Not
Contain
Nuts


Does Not
Contain
Crustaceans


Does Not
Contain
Mustard


Does Not
Contain
Fish


Does Not
Contain
Lupin


Does Not
Contain
Sesame


Does Not
Contain
Celery


May Contain
Soya


Does Not
Contain
Molluscs


Does Not
Contain
Sulphur
Dioxide

Dietary Information

Key: Suitable for


Suitable for
Vegetarian


May not be
suitable for
Vegan


May not be
suitable for
Kosher


May not be
suitable for
Halal


May not be
suitable for
Coeliac

Ingredients

WHEAT Flour (WHEAT, Calcium, Iron, Niacin, Thiamin), Sugar, Vegetable Oil Blend (Palm & Rapeseed Oil), Wholemeal WHEAT Flour, Breadcrumb (WHEAT Flour (WHEAT, Calcium, Iron, Niacin, Thiamin), Salt, Dextrose), Dextrose.