

Supplier's Product Code :  
Product Added :  
Last Updated by Supplier :  
erudus id :

DW345022  
19 March 2021  
13 September 2021  
219b817a20644aa1a266590e744c5822



The information on the **Erudus System** has been supplied by the manufacturers of the products and, whilst the owners of the Erudus System take steps to ensure the information is regularly updated, they give no warranty and no guarantee that the information is accurate. Product information and ingredients may change, please always read product labels carefully in addition to using the information provided by Erudus One.

We do not accept liability for any inaccuracies or incorrect information contained on this site. Please visit <http://www.erudus.com/terms-and-conditions> for full terms and conditions.

## Florentine Wafers Catering 2 x 200

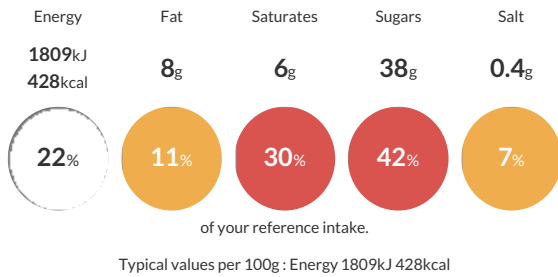
Short Product Name:  
Florentine Wafers

Shaped wafer biscuit for ice cream decoration.

Traded Unit GTIN: **05060006360954** Internal GTIN: **05060006360664** Supplier: **Nic Ice Ltd** Suppliers Product Code: **DW345022**

### Reference Intake

Each 100g portion contains:



### Nutritional Information

Typical Values	Per 100g
Energy	1809kJ 428kCal
Carbohydrates	81g
of which sugars	38g
Fat	8g
of which saturates	6g
Fibre	1.7g
Protein	7.5g
Salt	0.4g

### Allergy Information

Key: **Contains** **May Contain**



#### Allergen Statement

For allergens, including cereals containing gluten see **CAPITALISED/BOLD** ingredients. Contains **WHEAT/GLUTEN, SOYA, MILK AND EGG**.

### Ingredients

**WHEAT** flour (**WHEAT** flour, Calcium carbonate, Iron, Niacin, Thiamin), Sugar, Coconut oil, Emulsifier (**SOYA** lecithin), **WHEAT** starch, Whey powder (**MILK**), **EGG** albumen, Raising agent (Sodium bicarbonates), Salt, **EGG** yolk, Colour: Annatto norbixin.

### Dietary Information

Key: **Suitable for**

