

Supplier's Product Code :
Product Added :
Last Updated by Supplier :
erudus id :

11300
04 February 2022
04 February 2022
21a49f98e23a408b9ad63135d265f10b



The information on the **Erudus System** has been supplied by the manufacturers of the products and, whilst the owners of the Erudus System take steps to ensure the information is regularly updated, they give no warranty and no guarantee that the information is accurate. Product information and ingredients may change, please always read product labels carefully in addition to using the information provided by Erudus One.

We do not accept liability for any inaccuracies or incorrect information contained on this site. Please visit <http://www.erudus.com/terms-and-conditions> for full terms and conditions.

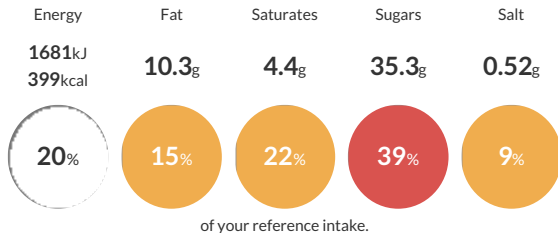
Go Ahead Yogurt Breaks -Strawberry 24 x 35g e

Yogurt flavour topping on a light crispy biscuit with sultanas and a strawberry flavour filling

Traded Unit GTIN: **5000168129983** Internal GTIN: **5000168129990** Supplier: **Pladis (UK) Ltd** Suppliers Product Code: **11300**

Reference Intake

Each 100g portion contains:



Typical values per 100g : Energy 1681kJ 399kcal

Nutritional Information

Typical Values	Per 100g
Energy	1681kJ 399kCal
Carbohydrates	72.1g
of which sugars	35.3g
Fat	10.3g
of which saturates	4.4g
Fibre	3.7g
Protein	5.1g
Salt	0.52g

Allergy Information

Key: **Contains** **May Contain**



Allergen Statement

Contains: Milk, Soya, Gluten.

May also contain Nuts, Sesame Seeds.

Dietary Information

Key: **Suitable for**



Ingredients

WHEAT Flour, Dried Grapes (23%) (Sultanas and Currants in varying proportions), Yogurt Flavour Coating (19%) [Sugar, Vegetable Fats (Palm, Shea in varying proportions), Dried Whey (**MILK**), Dried Fermented **MILK** (1%), Dried Skimmed **MILK**, Dried Whole **MILK**, Lactose (**MILK**), Acid (Citric Acid), Emulsifier (**SOYA** Lecithin), Natural Flavouring], Strawberry Flavour Filling (7%) [Bulking Agent (Maltitol Syrup), Humectant (Glycerine), Strawberry Puree (0.7%), **WHEAT** Bran, Strawberry Puree Concentrate (0.1%), Gelling Agent (Pectins), Acidity Regulators (Citric Acid, Sodium Citrates), Natural Flavouring, Stabiliser (Calcium Lactate)], Sugar, Vegetable Oil (Sunflower), **OAT** Fibre, Maltodextrin, Calcium Carbonate, Emulsifiers (**SOYA** Lecithin, E472e), **MILK** Solids, Rice Flour, Glucose Syrup, Natural Flavouring, Raising Agents (Sodium Bicarbonate, Disodium Diphosphate, Ammonium Bicarbonate), Salt, Citrus Fibre.