

Supplier's Product Code :
 Product Added :
 Last Updated by Supplier :
 erudus id :

KFC484
 21 October 2013
 04 November 2022
 23183b3485b14d738479d6063ca223fb



The information on the **Erudus System** has been supplied by the manufacturers of the products and, whilst the owners of the Erudus System take steps to ensure the information is regularly updated, they give no warranty and no guarantee that the information is accurate. Product information and ingredients may change, please always read product labels carefully in addition to using the information provided by Erudus One.

We do not accept liability for any inaccuracies or incorrect information contained on this site. Please visit <http://www.erudus.com/terms-and-conditions> for full terms and conditions.

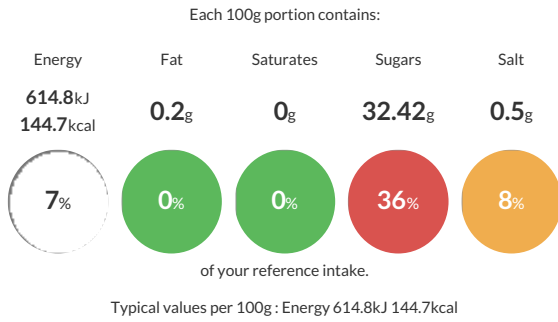
Peach, Apple and Apricot Chutney with Whitstable Bay Ale 1.2kg

Short Product Name:

Peach, Apple and Apricot Chutney with Whitstable Bay Ale in 1.2kg catering plastic tub

Traded Unit GTIN: Internal GTIN: Supplier: **The Wooden Spoon Preserving Company** Suppliers Product Code: **KFC484**

Reference Intake



Nutritional Information

Typical Values	Per 100g
Energy	614.8kJ 144.7kCal
Carbohydrates	34.7g
of which sugars	32.42g
Fat	0.2g
of which saturates	0g
Fibre	2.02g
Protein	0.9g
Salt	0.5g

Allergy Information

Key: **Contains** **May Contain**

Contains Cereal/Gluten	May Contain Milk	May Contain Eggs	May Contain Peanuts	May Contain Nuts	Does Not Contain Crustaceans	May Contain Mustard
Does Not Contain Fish	Does Not Contain Lupin	Does Not Contain Sesame	May Contain Celery	Does Not Contain Soya	Does Not Contain Molluscs	Does Not Contain Sulphur Dioxide

Gluten Claim

Gluten content is less than 20ppm.

Ingredients

Bramley Apples (28%), Peaches (22%), Whitstable Bay Ale (5%) (**BARLEY**), Apricots (4%), Sugar, Vinegar, Sultanas, , Garlic, Ginger, Black Pepper, Salt, Spices

Dietary Information

Key: **Suitable for**

Suitable for Vegetarian	Suitable for Vegan	May not be suitable for Kosher	May not be suitable for Halal	May not be suitable for Coeliac
-------------------------	--------------------	--------------------------------	-------------------------------	---------------------------------