

Supplier's Product Code :
 Product Added :
 Last Updated by Supplier :
 erudus id :

005575
 10 May 2022
 08 August 2022
 23c03f09cce142298590bafa670f6ac2



The information on the **Erudus System** has been supplied by the manufacturers of the products and, whilst the owners of the Erudus System take steps to ensure the information is regularly updated, they give no warranty and no guarantee that the information is accurate. Product information and ingredients may change, please always read product labels carefully in addition to using the information provided by Erudus One.

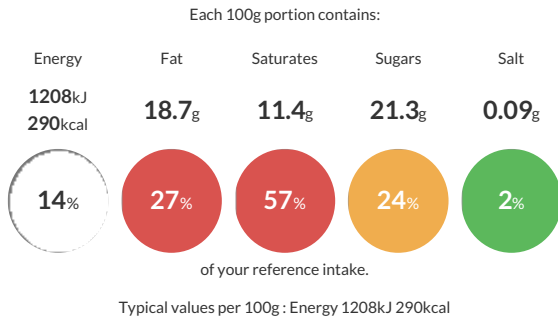
We do not accept liability for any inaccuracies or incorrect information contained on this site. Please visit <http://www.erudus.com/terms-and-conditions> for full terms and conditions.

Sweet amuse-bouche glasses - Frozen

9 Chocolate glasses (milk chocolate mousse, cocoa sauce, dark chocolate mousse and cocoa crumble) 9 Raspberry and vanilla glasses (crumble, vanilla mousse, raspberry preparation, raspberry and chopped pistachio) 9 Tiramisu-style glasses (cocoa biscuit soaked in coffee syrup, mascarpone mousse, whipped cream and cocoa powder) 9 Lemon meringue glasses (crumble, lemon mousse, meringue, semi-confit lemon zest)

Traded Unit GTIN: **03700478501654** Internal GTIN: **03700478501654** Supplier: **Traiteur De Paris** Suppliers Product Code: **005575**

Reference Intake



Nutritional Information

Typical Values	Per 100g
Energy	1208kJ 290kCal
Carbohydrates	25.1g
of which sugars	21.3g
Fat	18.7g
of which saturates	11.4g
Fibre	1.6g
Protein	4.5g
Salt	0.09g

Allergy Information

Key: **Contains** **May Contain**



Dietary Information

Key: **Suitable for**



Allergen Statement

Notifiable allergens are indicated in bold text in the list of ingredients. Produced in a facility also handling other nuts, sesame, celery, mustard, molluscs, shellfish, fish, sulphites, peanuts, lupin.

Ingredients

Cream (**MILK**), sugar, semi-skimmed **MILK**, water, cottage cheese (**MILK**), milk chocolate coating 4,3% (sugar, whole **MILK** powder, cocoa butter, cocoa mass, emulsifier: **SOYA** lecithin, natural vanilla flavouring). Dark chocolate coating 4% [58% cocoa] (cocoa mass, sugar, cocoa butter, emulsifier: **SOYA** lecithin). **EGG** yolk, raspberry puree 3,7% (raspberry, sugar), **WHEAT** flour (**GLUTEN**), whole **EGG**, butter (**MILK**), lemon juice from concentrate 2,6% (water, lemon juice concentrate), mascarpone 2,5% (cream (**MILK**), acidity regulator: citric acid), **ALMOND** powder, cocoa biscuit 1,5% (**WHEAT** flour (**GLUTEN**), sugar, whole **EGG**, water, **WHEAT** starch (**GLUTEN**), cocoa powder, **EGG** white powder, raising agents (diphosphates, sodium carbonates, ammonium carbonates (contains **WHEAT** starch (**GLUTEN**))), roasted **BARLEY** malt flour (**GLUTEN**)), **EGG** white, glucose syrup, brown sugar, cocoa powder 0,8%, raspberry 0,7%, semi-confit lemon zest 0,7% (sugar, lemon zest, water, lemon juice), coffee extract 0,4% (coffee, sugar), potato starch, gelling agents (agar-agar, pectin, carrageenan), cocoa butter, lemon peel 0,1%, chopped **PISTACHIO** 0,1%, thickeners (locust bean gum, xanthan gum), corn starch, natural vanilla flavouring 0,07%, exhausted vanilla bean.