

Supplier's Product Code :
Product Added :
Last Updated by Supplier :
erudus id :

6552
01 June 2017
16 November 2022
23d862523e974ee68f6294f54013e00f



The information on the **Erudus System** has been supplied by the manufacturers of the products and, whilst the owners of the Erudus System take steps to ensure the information is regularly updated, they give no warranty and no guarantee that the information is accurate. Product information and ingredients may change, please always read product labels carefully in addition to using the information provided by Erudus One.

We do not accept liability for any inaccuracies or incorrect information contained on this site. Please visit <http://www.erudus.com/terms-and-conditions> for full terms and conditions.

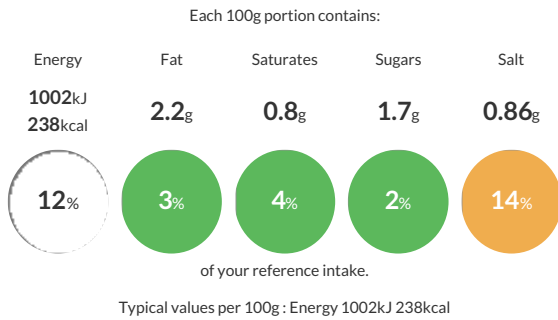
Malted Sandwich Bread (Thick Lateral Slice) x5

Short Product Name:
Malted bread laterally sliced

A malted dough baked in a lidded box tin, sliced horizontally at 12.5mm

Traded Unit GTIN: **5020179065520** Internal GTIN: Supplier: **Fosters Bakery (Staincross) Limited** Suppliers Product Code: **6552**

Reference Intake



Nutritional Information

Typical Values	Per 100g
Energy	1002kJ 238kCal
Carbohydrates	45g
of which sugars	1.7g
Fat	2.2g
of which saturates	0.8g
Fibre	3.5g
Protein	9.7g
Salt	0.86g

Allergy Information

Key: **Contains** **May Contain**



Allergen Statement

Manufactured on a site that handles milk, egg, soya
May contain Milk, Egg, Soya

Dietary Information

Key: **Suitable for**



Ingredients

WHEAT Flour (WHEAT Flour, Calcium Carbonate, Niacin, Iron, Thiamin), Water, Malted WHEAT Flake (9.5%), Wholemeal WHEAT Flour, WHEAT Gluten, Yeast, BARLEY Malt Flour, Salt, Palm Oil, Emulsifiers[Mono and di-glycerides of fatty acids, Mono and di-acetyltartaric acid esters of mono and di-glycerides of fatty acids], Rapeseed Oil, Flour treatment agent[Ascorbic Acid].