

Supplier's Product Code :
Product Added :
Last Updated by Supplier :
erudus id :

65011
28 May 2019
02 March 2022
2571a88b2c5946cb841b027ec42b3448



The information on the **Erudus System** has been supplied by the manufacturers of the products and, whilst the owners of the Erudus System take steps to ensure the information is regularly updated, they give no warranty and no guarantee that the information is accurate. Product information and ingredients may change, please always read product labels carefully in addition to using the information provided by Erudus One.

We do not accept liability for any inaccuracies or incorrect information contained on this site. Please visit <http://www.erudus.com/terms-and-conditions> for full terms and conditions.

Lime Marmalade 6 x 340g

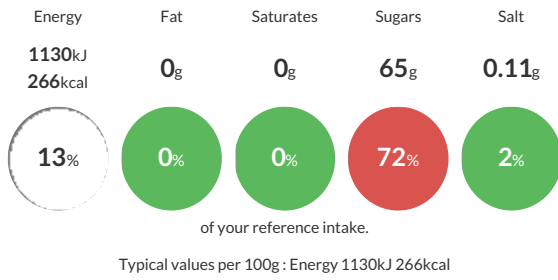
Short Product Name:
Lime Marmalade

Soft gel, containing pieces of peel with tangy and refreshing strong lime flavour

Traded Unit GTIN: **00043647650115** Internal GTIN: **043647650016** Supplier : **Wilkin and Sons Ltd (Tiptree)** Suppliers Product Code: **65011**

Reference Intake

Each 100g portion contains:



Nutritional Information

Typical Values	Per 100g
Energy	1130kJ 266kCal
Carbohydrates	66g
of which sugars	65g
Fat	0g
of which saturates	0g
Fibre	-g
Protein	0g
Salt	0.11g

Allergy Information

Key: **Contains** **May Contain**



Dietary Information

Key: **Suitable for**



Ingredients

Sugar, Limes, Gelling Agent- Citrus Pectin, Acidity Regulator- Sodium Citrate