

Supplier's Product Code :  
 Product Added :  
 Last Updated by Supplier :  
 erudus id :

WS391  
 05 January 2023  
 03 February 2023  
 2847cf8e0b8a4348849852f8ea651a95



The information on the **Erudus System** has been supplied by the manufacturers of the products and, whilst the owners of the Erudus System take steps to ensure the information is regularly updated, they give no warranty and no guarantee that the information is accurate. Product information and ingredients may change, please always read product labels carefully in addition to using the information provided by Erudus One.

We do not accept liability for any inaccuracies or incorrect information contained on this site. Please visit <http://www.erudus.com/terms-and-conditions> for full terms and conditions.

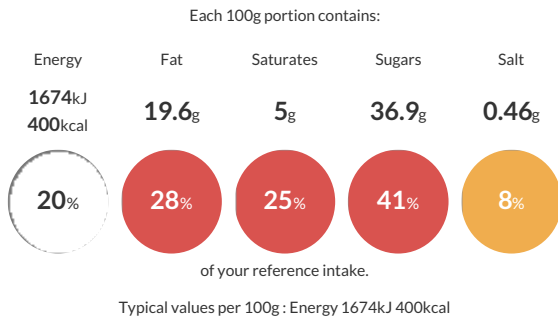
## Raspberry Ripple Cake (Pre-cut 1x16)

Short Product Name:  
 Raspberry Ripple Cake

A light, traditional sponge baked with pink swirls, filled with buttercream and raspberry jam and hand finished with buttercream and raspberry ripple decoration.

Traded Unit GTIN: **5060082388132** Internal GTIN: Supplier: **Sussex Bakes Ltd T/A More Food** Suppliers Product Code: **WS391**

### Reference Intake



### Nutritional Information

Typical Values	Per 100g
Energy	1674kJ 400kCal
Carbohydrates	53.5g
of which sugars	36.9g
Fat	19.6g
of which saturates	5g
Fibre	0.8g
Protein	3.6g
Salt	0.46g

### Allergy Information

Key: **Contains** **May Contain**



### Dietary Information

Key: **Suitable for**



### Allergen Statement

May contain traces of nuts.

### Ingredients

Sugar, Wheat Flour (**WHEAT** Flour, Calcium Carbonate, Iron, Niacin, Thiamin), Pasteurised Whole **EGG**, Rapeseed Oil, Water, Raspberry Jam (6%) (Glucose Syrup, Raspberry Puree, Gelling Agent (Pectin), Acidity Regulators (Citric Acid, Trisodium Citrate)), Butter (**MILK**), Margarine (Vegetable Oils (Palm, Rapeseed), Water, Emulsifier (Mono- and Diglycerides of Fatty Acids)), Humectant (Glycerol), **WHEAT** Starch, Raising Agents (Disodium Diphosphate, Sodium Hydrogen Carbonate, Potassium Carbonate), Whey Powder (**MILK**), Modified Potato Starch, Emulsifiers (Mono- and Diglycerides of Fatty Acids, Sodium Stearoyl-2-Lactylate), **WHEAT** Gluten, Salt, Stabilisers (Sodium Carboxy Methyl Cellulose, Guar Gum), Colour (Carmine), Freeze-dried Raspberries.