

Supplier's Product Code :
Product Added :
Last Updated by Supplier :
erudus id :

32203
13 November 2024
13 November 2024
2a3165fe5b91417cad958bef59c5936b



The information on the **Erudus System** has been supplied by the manufacturers of the products and, whilst the owners of the Erudus System take steps to ensure the information is regularly updated, they give no warranty and no guarantee that the information is accurate. Product information and ingredients may change, please always read product labels carefully in addition to using the information provided by Erudus One.

We do not accept liability for any inaccuracies or incorrect information contained on this site. Please visit <http://www.erudus.com/terms-and-conditions> for full terms and conditions.

Sysco Classic Strawberry Dairy Ice Cream

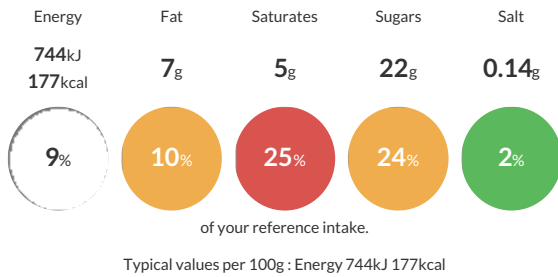
Short Product Name:
Strawberry Dairy Ice Cream

Strawberry flavour dairy ice cream with strawberry pieces

Traded Unit GTIN: **05024333214199** Internal GTIN: **5024333143260** Supplier: **Brake Bros Ltd** Suppliers Product Code: **32203**

Reference Intake

Each 100g portion contains:



Nutritional Information

Typical Values	Per 100g
Energy	744kJ 177kCal
Carbohydrates	25g
of which sugars	22g
Fat	7g
of which saturates	5g
Fibre	0.5g
Protein	3.4g
Salt	0.14g

Allergy Information

Key: **Contains** **May Contain**



Dietary Information

Key: **Suitable for**



Ingredients

Water, Double Cream (Milk) (15%), Sugar, Strawberry Sauce (11%)(Strawberries (53%), Invert Sugar, Sugar, Water, Gelling Agent(Pectin), Acidity Regulator(Citric Acid), Thickener(Guar Gum), Colour (Anthocyanins), Flavouring), Buttermilk Powder, Whey Powder (Milk), Emulsifier(Mono- and Di-Glycerides of Fatty Acids), Acid(Citric Acid), Flavouring, Stabilisers (Guar Gum, Sodium Alginate), Colour(Beetroot Red).