

Supplier's Product Code :
Product Added :
Last Updated by Supplier :
erudus id :

KSBL250
01 November 2013
27 February 2023
2a36ed9ea84e4263a4ac20530e907c96



The information on the Erudus System has been supplied by the manufacturers of the products and, whilst the owners of the Erudus System take steps to ensure the information is regularly updated, they give no warranty and no guarantee that the information is accurate. Product information and ingredients may change, please always read product labels carefully in addition to using the information provided by Erudus One.

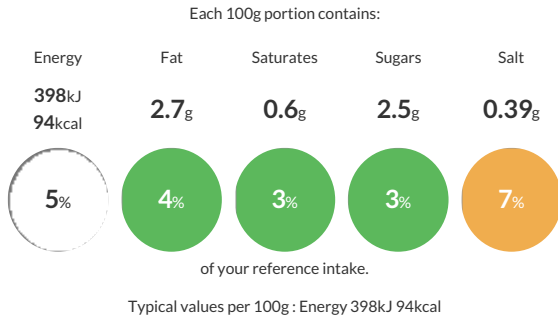
We do not accept liability for any inaccuracies or incorrect information contained on this site. Please visit <http://www.erudus.com/terms-and-conditions> for full terms and conditions.

Kids Spaghetti Bolognaise 250g x 20

Cookekd spaghetti pasta with a seasoned beef mince sauce

Traded Unit GTIN: 5060058031390 Internal GTIN: Supplier: Scheff Foods Ltd Suppliers Product Code: KSBL250

Reference Intake



Nutritional Information

Typical Values	Per 100g
Energy	398kJ 94kCal
Carbohydrates	11.4g
of which sugars	2.5g
Fat	2.7g
of which saturates	0.6g
Fibre	1.2g
Protein	4.9g
Salt	0.39g

Allergy Information

Key: **Contains** **May Contain**



Dietary Information

Key: **Suitable for**



Ingredients

Cooked Spaghetti (40%) (Contains Water, Durum **WHEAT** Semolina, Rapeseed Oil), Tomato, Cooked Minced Beef (11%), Water, Onion, Tomato Puree, Red Wine, Rapeseed Oil, Sugar, Cornflour, Garlic Puree, Salt, Herbs, Spice