

Supplier's Product Code :
Product Added :
Last Updated by Supplier :
erudus id :

WHPE525V
11 September 2015
22 November 2021
2ca67643e9bd4fd9935cf0bf39f18f69



The information on the Erudus System has been supplied by the manufacturers of the products and, whilst the owners of the Erudus System take steps to ensure the information is regularly updated, they give no warranty and no guarantee that the information is accurate. Product information and ingredients may change, please always read product labels carefully in addition to using the information provided by Erudus One.

We do not accept liability for any inaccuracies or incorrect information contained on this site. Please visit <http://www.erudus.com/terms-and-conditions> for full terms and conditions.

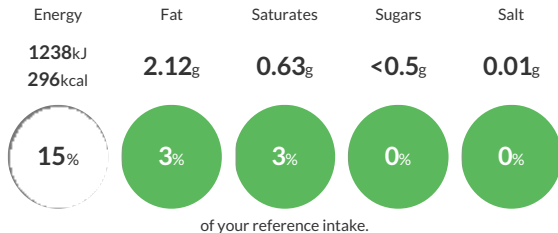
GROUND WHITE PEPPER HT 6 x525g

The ground and blended product of Piper nigrum L., cleaned, sterilised, dried and removed the outer part of pericarp by decortication.

Traded Unit GTIN: 5020933028860 Internal GTIN: 5020933023889 Supplier: Sleaford Quality Foods Suppliers Product Code: WHPE525V

Reference Intake

Each 100g portion contains:



Typical values per 100g : Energy 1238kJ 296kcal

Nutritional Information

Typical Values	Per 100g
Energy	1238kJ 296kCal
Carbohydrates	42.41g
of which sugars	<0.5g
Fat	2.12g
of which saturates	0.63g
Fibre	26.2g
Protein	10.4g
Salt	0.01g

Allergy Information

Key: **Contains** **May Contain**



Gluten Claim

Gluten content is less than 20ppm.

Ingredients

Ground White Pepper.

Dietary Information

Key: **Suitable for**

