

Supplier's Product Code :
Product Added :
Last Updated by Supplier :
erudus id :

67492342
09 October 2024
09 October 2024
2ccc75dda8324ca38095002c170e66ab



The information on the Erudus System has been supplied by the manufacturers of the products and, whilst the owners of the Erudus System take steps to ensure the information is regularly updated, they give no warranty and no guarantee that the information is accurate. Product information and ingredients may change, please always read product labels carefully in addition to using the information provided by Erudus One.

We do not accept liability for any inaccuracies or incorrect information contained on this site. Please visit <http://www.erudus.com/terms-and-conditions> for full terms and conditions.

Pot Noodle Chicken & Mushroom 90g

Short Product Name:

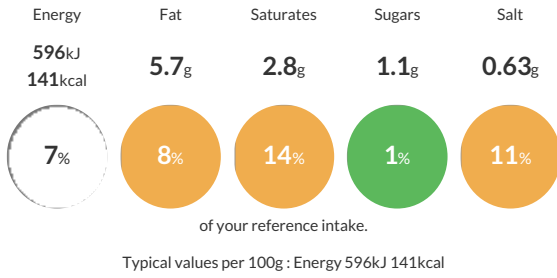
Chicken & Mushroom Instant Noodles

Noodles in a Chicken and Mushroom flavour sauce with vegetables and a little sachet of soy sauce.

Traded Unit GTIN: 5000118203404 Internal GTIN: 5000118203503 Supplier: Unilever UK Limited Suppliers Product Code: 67492342

Reference Intake

Each 100g portion contains:



Nutritional Information

Typical Values	Per 100g
Energy	596kJ 141kCal
Carbohydrates	19g
of which sugars	1.1g
Fat	5.7g
of which saturates	2.8g
Fibre	1.2g
Protein	3.2g
Salt	0.63g

Allergy Information

Key: Contains May Contain



Dietary Information

Key: Suitable for



Allergen Statement

May contain celery, egg, and mustard

Ingredients

Ingredients (as sold): Noodle mix (96%): Dried noodles (69%) [WHEAT flour (contains calcium carbonate, iron, niacin, thiamin), palm oil, salt, firming agents (potassium carbonate, sodium carbonates)], maltodextrin, WHEAT flour, sweetcorn, potassium chloride, flavour enhancers (monosodium glutamate, disodium inosinate, disodium guanylate), flavourings (contain MILK), sugar, skimmed MILK powder, palm fat, salt, onion powder†, yeast powder (contains WHEAT, BARLEY), mushrooms (0.4%), herbs (chives†, sage), potato starch, mushroom juice concentrate†, acid (citric acid).
Sauce sachet (4%): Soy sauce [water, soy sauce (SOYBEANS, WHEAT), salt, molasses, sugar, acid (acetic acid)].

†From sustainable agriculture.