

Supplier's Product Code :
Product Added :
Last Updated by Supplier :
erudus id :

BFL3748
11 April 2022
05 April 2024
2e91f93f485c4567bad2d19fc42662cc



The information on the Erudus System has been supplied by the manufacturers of the products and, whilst the owners of the Erudus System take steps to ensure the information is regularly updated, they give no warranty and no guarantee that the information is accurate. Product information and ingredients may change, please always read product labels carefully in addition to using the information provided by Erudus One.

We do not accept liability for any inaccuracies or incorrect information contained on this site. Please visit <http://www.erudus.com/terms-and-conditions> for full terms and conditions.

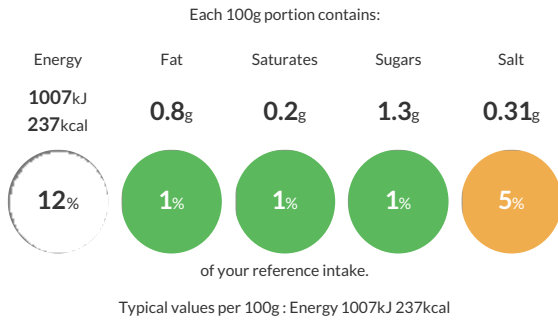
White Pitta Bread 60g (1 x 72)

Short Product Name:

Fully baked, oval-shaped, white pitta bread. Packed 12 x 6. Suitable for vegetarians and vegans. (1 x 72)

Traded Unit GTIN: 5022558001303 Internal GTIN: Supplier: Central Foods Group Ltd Suppliers Product Code: BFL3748

Reference Intake



Nutritional Information

| Typical Values | Per 100g |
|--------------------|-------------------|
| Energy | 1007kJ 237kCal |
| Carbohydrates | 48.1g |
| of which sugars | 1.3g |
| Fat | 0.8g |
| of which saturates | 0.2g |
| Fibre | 2.2g |
| Protein | 8.3g |
| Salt | 0.31g |

Allergy Information

Key: Contains May Contain



Allergen Statement

For allergens, including cereals containing gluten, see ingredients in CAPITALS.

Ingredients

Fortified WHEAT Flour (Calcium Carbonate, Niacin, Iron, Thiamin), Water, Yeast, Sugar, Salt, Preservative (Calcium Propionate).

Dietary Information

Key: Suitable for

