

Supplier's Product Code :
 Product Added :
 Last Updated by Supplier :
 erudus id :

MCHOC100
 02 January 2025
 02 January 2025
 2ef5094147084c50b13b9d26ced67a55



The information on the Erudus System has been supplied by the manufacturers of the products and, whilst the owners of the Erudus System take steps to ensure the information is regularly updated, they give no warranty and no guarantee that the information is accurate. Product information and ingredients may change, please always read product labels carefully in addition to using the information provided by Erudus One.

We do not accept liability for any inaccuracies or incorrect information contained on this site. Please visit <http://www.erudus.com/terms-and-conditions> for full terms and conditions.

Marshfield Farm Chocoholic Heaven Ice Cream 12 x 125ml

Short Product Name:

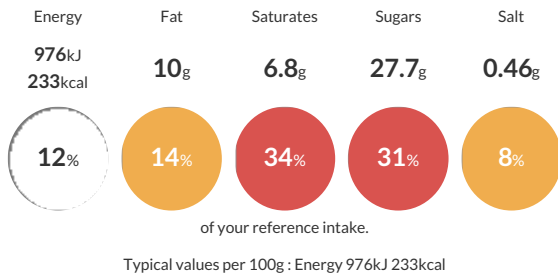
Marshfield Farm Chocoholic Heaven Ice Cream

Chocolate dairy ice cream with chocolate chips and chocolate flavour ripple.

Traded Unit GTIN: 5060012791124 Internal GTIN: 5060012790158 Supplier: Marshfield Farm Ice Cream Ltd Suppliers Product Code: MCHOC100

Reference Intake

Each 100g portion contains:



Nutritional Information

Typical Values	Per 100g
Energy	976kJ 233kCal
Carbohydrates	31.2g
of which sugars	27.7g
Fat	10g
of which saturates	6.8g
Fibre	-g
Protein	4g
Salt	0.46g

Allergy Information

Key: Contains May Contain

Does Not Contain Cereal/Gluten	Contains Milk	Does Not Contain Eggs	Does Not Contain Peanuts	Does Not Contain Nuts	Does Not Contain Crustaceans	Does Not Contain Mustard
Does Not Contain Fish	Does Not Contain Lupin	Does Not Contain Sesame	Does Not Contain Celery	Contains Soya	Does Not Contain Molluscs	Does Not Contain Sulphur Dioxide

Dietary Information

Key: Suitable for

Suitable for Vegetarian	NO DATA for Vegan	Suitable for Kosher	Suitable for Halal	NO DATA for Coeliac
-------------------------	-------------------	---------------------	--------------------	---------------------

Allergen Statement

Contains milk and soya

Our suppliers cannot guarantee that their ingredients are free from traces of nuts

Ingredients

Fresh Whole Milk, Sugar, Chocolate Flavour Ripple (8%) (Sugar, water, glucose syrup, cocoa powder, stabilisers: Guar gum, Xanthan gum, Locust bean gum, Acid: Citric acid, Natural flavouring), Dark chocolate (8%) (Cocoa mass, sugar, cocoa butter, emulsifier: Soya lecithin, Natural vanilla flavouring), Double Cream (Milk) (6.5%), Chocolate chips (5.5%) (Cocoa mass, Sugar, Emulsifier: Soya lecithin, Natural vanilla flavouring), Butter milk powder, Glucose, Dextrose, Fat-reduced cocoa powder (<1%), Emulsifier: Mono- and Diglycerides of Fatty Acids, Stabilisers: Locust bean gum Guar Gum, Carrageenan